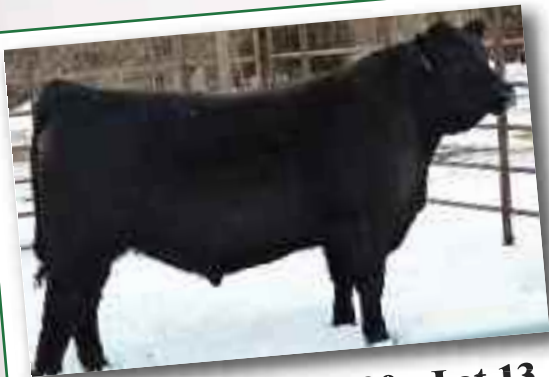


**19th Annual
Performance Bull Sale**

ROTH
ANGUS RANCH

**FRIDAY, MARCH 24, 2017
4:00 PM • AT THE RANCH**



Roth Unanimous 620 - Lot 13



Roth Wayon 649 - Lot 25

This sale will be broadcast live on the internet.
DVAuction
Broadcasting Real-Time Auctions.
Real time bidding & proxy bidding available.
No questions asked. Ask for it! (800) 776-5275 - www.dvauction.com

www.rothangusranch.com

Performance BULL SALE

Friday, March 24, 2017
★ 4 p.m. ★
at the ranch, Freeman, SD



Craig Roth
42879 277th St. • Freeman, SD 57029
(605) 925-4650 • Cell (605) 359-9220

Cattlemen,

Welcome to our family's 19th Annual Performance tested bull sale. We would like to invite you to our place on Friday, March 24th, 2017. This year we are offering 38 yearling and 11 fall bulls that have been performance tested and evaluated for breeding soundness. We have recorded data on these bulls in all areas including calving, weaning, yearling, carcass, ultrasound, hip height, pelvic and scrotal measurements. By taking and recording this data it allows you to know what each bull is capable of doing and also allows us to improve our herd.

We specifically breed our cows to produce easy calving, rapid growing progeny that also exhibits outstanding maternal traits. Docility and structural soundness is of utmost importance as well as phenotype of each offspring produced. In addition to that we feel that each animal needs to have the ability to perform in the feedlot and on the rail.

We would enjoy having you join us on Friday, March 24th @ 4:00 p.m. for our video auction. Immediately following the auction, please stay for our post sale social and Angus supper.

Thanks and God Bless,

The Roth's



Directions:

From Jct. 44 & 37 Parkston, 19 miles east to 429th Ave. then 2 south or, from Jct. 44 & 81, 10 west to 429th Ave. then 2 mi. south.

Sale Day Phones:

Craig.....(605) 359-9220
Cody.....(605) 999-8670
Heidi.....(605) 359-7827

Auctioneer:

Dustin Carter, Vermillion, South Dakota.(712) 898-9972

Livestock Press Representatives:

Jeff Kapperman TriState Neighbor(605)..... 940-5104
Donnie Leddy, Cattle Business Weekly...(605) 695-0113

Delivery: Roth Angus offers free delivery on bulls within 250 miles of Freeman. Or take advantage of our special Sale Day Only - Haul Your Own Discount, and receive \$50 per bull discount if your bring your trailer sale day and haul your bull(s) home.

Inspection: Bulls may be viewed anytime prior to the sale at the ranch.

Volume Discount: A 5% discount will be given on the purchase of five or more bulls.

Herd Health: All cattle will be accompanied with proper health papers. All bulls selling have been fertility tested by the herd veterinarian, Dr. Greg Ver Heul of Sioux Nation. All bulls have received Vira Shield, Lepto and 7-way Clostridium. They are immunized for both Type 1 and Type 2 BVD, Rednose, Para Influenza and BRSV. All bulls selling have tested negative for BVD and Johnes.

Supplement Sheet: Scrotal, pelvic, hip height and updated Epi's will be available online after March 14th, and a handout will be available sale day.

Liability: All persons attending this sale do so at their own risk.

Terms and Conditions: The terms of the sale are cash and all settlements must be made at the close of the auction. All cattle will sell according to the terms and conditions of the American Angus Association.

Interest: We retain one-third interest in all bulls selling unless specified otherwise.

Watch & bid online for FREE at **DVAuction**
Grandstanding Real-Time Auctions

View the Auction Live!
Bid Online... you're ringside
right at your desk!

Bidding online is as easy as 1,2,3...

1. Click on auction at www.dvauction.com under the "register" tab
2. Agree to bidding agreement by clicking on the "bidding" tab at 10:00 AM (before the auction) or "my account" tab if you're a returning bidder
3. Place bid for the lots you wish to purchase!

What special interest is required for successful bidding to take place? Check the business website in the top left corner for more information.

Proxy Bidding: If you can't make time to watch the sale, neither worry! Bid and buy on your terms, while your bid works your way. Use our "proxy" bidding on the auction today, and bid in your name on Day. We'll handle it for you!

Having trouble? Our toll-free hotline, our bid line, or our live support are always available at (605) 474-5653.

DVAuction
42879 277th St. • Freeman, SD 57029 • (605) 925-4650 • www.dvauction.com

Please feel free to contact our salesperson about the sale or to view the cattle for you.

REFERENCE SIRES

REFERENCE SIRE A: CONNEALY BLACK GRANITE

A calving ease bull that is showing impressive muscle patterns in his calvise. His calm demeanor is being passed on to his progeny.

EPD's

CED	BW	WW	YW	MM	CW	MB	RE
+14	+0	+58	+96	+24	+42	+.59	+1.31

Connealy Consensus
Connealy Consensus #7729
 Blue Lilly of Conanga 16

S A V Bismark 5682
Eura Elga of Conanga 9109
 Erua Cal of Conanga 56b



REFERENCE SIRE B: RB ACTIVE DUTY 010

Active Duty has a high docility EPD that is reflected in his offspring. He'll also add power, thickness and capacity to your herd.

EPD's

CED	BW	WW	YW	MM	CW	MB	RE
+9	+1.6	+65	+118	+26	+38	+.46	+.32

Bon View New Design 1407
LLC New Standard
 LCC Sunset K3118

Vermillion Dateline 7078
B A Lady 6807 305
 G D Lady Hi Flyer 302



REFERENCE SIRE C: VISION UNANIMOUS 1418

Unanimous has combined explosive performance, moderate BW, outstanding carcass profile and exceptional phenotype and structure.

EPD's

CED	BW	WW	YW	MM	CW	MB	RE
+3	+3	+73	+125	+18	+62	+.71	+.33

Gambles Royal Flush
Vision Royal Stockman
 LaGrand Pride 7140

Boyd On Target 1083
Vision Edella 665
 Vision Edlla 336



REFERENCE SIRE D: WERNER WAR PARTY 2417

Outcross pedigree with calvin ease growth, carcass, and quiet disposition.

EPD's

CED	BW	WW	YW	MM	CW	MB	RE
+3	+1.4	+61	+113	+41	+59	+.45	+1.25

Connealy Lead On
Connealy Onward
 Altune of Conanga 6104

B A R Ext Traveler 205
BAAR USA Lady Jaye 489
 Cra Lady Jaye 608 498 S Easy



REFERENCE SIRE E: MUSGRAVE BLACK LOCH

He is a heavy muscled calving ease sire that is wide based and square hipped.

EPD's

CED	BW	WW	YW	MM	CW	MB	RE
+16	-1.4	+55	+94	+33	+29	+.77	+.50

Kesslers Frontman R001
Musgrave Foundation
 MCATL Blackcap Juara 29-434

Connealy Reflection
BA Lady Barbara
 MA Lady Barbara 963



REFERENCE SIRE F: BALDRIGE WAYLON W34

Outcross pedigree with calvin ease growth, carcass, and quiet disposition.

EPD's

CED	BW	WW	YW	MM	CW	MB	RE
-5	+3.8	+69	+119	+18	+73	+1.17	+.83

Rito 112 of 2536 Rito 616
GAR-EGL Protege
 L B 6807 Isabel 339

Woodhill Foresight
Baldrige Blackcap T163
 BBaldrige Blackcap P326



REFERENCE SIRE G: R B TOUR OF DUTY 177

A moderate birth weight bull, sound structured, transmitting added length and outstanding Docility.

EPD's

CED	BW	WW	YW	MM	CW	MB	RE
+7	+2.5	+66	+117	+25	+65	+.49	+.98

Connealy Onward
Werner War Party 2417
 BAAR USA Lady Jaye 489

Vermillion Dateline 7078
BA Lady 6807 305
 G D Lady Hi Flyer



REFERENCE SIRE H: KOUPALS B&B IDENTITY

Identity is an extremely complete Upward son who is sound and deep ribbed.

EPD's

CED	BW	WW	YW	MM	CW	MB	RE
-2	+1.6	+60	+113	+35	+55	+.54	+.71

Connealy Onward
Sitz Upward 307R
 Sitz Henrietta Pride 81M

GAR Exaltation 3144
B&B Erica 605
 B&B Erica 4064



Roth Angus YEARLING BULLS

1 Roth Black Granite 606

DOB: 01/20/16 Reg. #18695555

Connealy Consensus 7229 | Connealy Consensus
 Connealy Black Granite | Blue Lilly of Conanga 16
 Eura Elga of Conanga 9109 | S A V Bismark 5682
 A A R Ten X 7008 S A | Mytty In Focus
 Roth Lady Eraline 444 | A A R Lady Kelton 5551
 Roth Lady Eraline 8127 | Baldrige Link L29
 Roth Lady Eraline 0427

EPD's

CED	BW	WW	YW	MILK	\$W	\$F	\$G	\$B
13	0	58	102	28	55.94	61.93	30.23	93.55

BW

W

DAM'S PRODUCTION: 1@97 1@109 Grand Dam Pathfinder

BW	68
Adj. WW	740/109
Adj. YW	1271/112
Ultrasound	
REA	13.6/97
IMF	6.2/112
Carcass EPDs	
CW	25
Marb.	0.36
REA	0.62
FAT	0.011



Craig & Heidi with Brian & Lynn Christopher from Decorah, IA.

2 Roth Black Granite 615

DOB: 01/22/16 Reg. #18695584

Connealy Consensus 7229 | Connealy Consensus
 Connealy Black Granite | Blue Lilly of Conanga 16
 Eura Elga of Conanga 9109 | S A V Bismark 5682
 Roth In Focus 7057 | Mytty In Focus
 Roth Evergreen 1305 | Roth Miss Shipps 563
 Roth Evergreen 4091 | Famous 7001
 Rocky Mt Evergreen 943

EPD's

CED	BW	WW	YW	MILK	\$W	\$F	\$G	\$B
14	-1.2	52	88	22	49.23	40.5	34.86	93.02

BW

W

DAM'S PRODUCTION: 2@86 2@95

BW	67
Adj. WW	688/97
Adj. YW	1213/101
Ultrasound	
REA	17.1/118
IMF	4.39/78
Carcass EPDs	
CW	24
Marb.	0.38
REA	0.83
FAT	-0.003



LOT 2

3 Roth Black Granite 621

DOB: 01/23/16 Reg. #18695553

Connealy Consensus 7229 | Connealy Consensus
 Connealy Black Granite | Blue Lilly of Conanga 16
 Eura Elga of Conanga 9109 | S A V Bismarck 5682
 Coleman Regis 904 | S A V Final Answer 0035
 Roth Wendy 405 | Coleman Donna 714
 Roth Wendy 221 | Connealy Impression
 Roth Wendy 8059

EPD's

CED	BW	WW	YW	MILK	\$W	\$F	\$G	\$B
14	-0.1	52	88	22	47.62	40.5	27.88	77.55

BW

W

DAM'S PRODUCTION: 1@93 1@94

BW	67
Adj. WW	638/94
Adj. YW	1201/106
Ultrasound	
REA	14.2/101
IMF	5.68/102
Carcass EPDs	
CW	20
Marb.	0.31
REA	0.66
FAT	0.026

4 Roth Black Granite 634

DOB: 01/26/16 Reg. #18686022

Connealy Consensus 7229 | Connealy Consensus
 Connealy Black Granite | Blue Lilly of Conanga 16
 Eura Elga of Conanga 9109 | S A V Bismarck 5682
 Jindra Double Vision | Connealy Reflection
 Roth Beauty 485 | Hoff Rachel 8312 405
 Roth Beauty 9048 | TC Grid Topper 355
 Roth Beauty 4048

EPD's

CED	BW	WW	YW	MILK	\$W	\$F	\$G	\$B
12	0.1	61	104	27	58.58	63.5	25.71	87.35

BW

W

DAM'S PRODUCTION: 1@93 1@110

BW	67
Adj. WW	752/110
Adj. YW	1224/108
Ultrasound	
REA	15.2/109
IMF	5.05/91
Carcass EPDs	
CW	24
Marb.	0.25
REA	0.73
FAT	0.022

5 Roth Black Granite 655

DOB: 01/28/16 Reg. #18686020

Connealy Consensus 7229 | Connealy Consensus
Blue Lilly of Conanga 16
Connealy Black Granite
Eura Elga of Conanga 9109 | S A V Bismarck 5682
Eura Cal of Conanga 56B
HF Prowler 43U | HF Kodiak 5R
HF Rosebud 98P
Roth Beauty 463
Roth Beauty 135 | Sydgen C C & 7
Roth Beauty 3009

EPD's

CED	BW	WW	YW	MILK	\$W	\$F	\$G	\$B
12	0.9	48	85	25	44.1	37.9	27.98	72.91

DAM'S PRODUCTION: 1@102 1@92 **Grand Dam Pathfinder**

BW	75
Adj. WW	627/92
Adj. YW	1168/103
Ultrasound	
REA	11.8/85
IMF	6.22/112
Carcass EPDs	
CW	18
Marb.	0.36
REA	0.52
FAT	0.033

6 Roth Black Granite 659

DOB: 01/30/16 Reg. #18695595

Connealy Consensus 7229 | Connealy Consensus
Blue Lilly of Conanga 16
Connealy Black Granite
Eura Elga of Conanga 9109 | S A V Bismarck 5682
Eura Cal of Conanga 56B
Connealy Contrast | Connealy Danny Boy
Doris of Conanga 669
Roth Beauty 092
Roth Beauty 7011 | TC Freedom 104
Roth Beauty 4027

EPD's

CED	BW	WW	YW	MILK	\$W	\$F	\$G	\$B
8	1.6	47	80	25	43.42	29.69	38.48	113.19

DAM'S PRODUCTION: 5@105 5@102

BW	90
Adj. WW	703/99
Adj. YW	1263/105
Ultrasound	
REA	15.9/111
IMF	5.13/92
Carcass EPDs	
CW	33
Marb.	0.52
REA	0.86
FAT	0.005

7 Roth Black Granite 660

DOB: 01/30/16 Reg. #18686018

Connealy Consensus 7229 | Connealy Consensus
Blue Lilly of Conanga 16
Connealy Black Granite
Eura Elga of Conanga 9109 | S A V Bismarck 5682
Eura Cal of Conanga 56B
HF Prowler 43U | HF Kodiak 5R
HF Rosebud 98P
Roth Pride 4130
Roth Pride 8104 | Famous 7001
Roth Pride 3021

EPD's

CED	BW	WW	YW	MILK	\$W	\$F	\$G	\$B
12	0.6	51	85	24	48.29	35.82	25.42	82.90

DAM'S PRODUCTION: 1@99 1@98

BW	72
Adj. WW	669/98
Adj. YW	1227/108
Ultrasound	
REA	138/100
IMF	5.64/102
Carcass EPDs	
CW	24
Marb.	0.31
REA	0.65
FAT	0.041

8 Roth Prophet 647

DOB: 01/27/16 Reg. #18700691

C R A Bextor 872 5205 608 | B A R Ext Traveler 205
Cra Lady Jaye 608 498 S Easy
G A R Prophet
G A R Objective 1885 | S S Objective T510 0T26
G A R 1407 New Design 2232
Roth Tiger 115 | HF Tiger 5T
Roth Kindnes Evidence 5015
Roth Beauty 3212
Roth Beauty 6008 | P V F New Horizon 001
Roth Beauty 3009

EPD's

CED	BW	WW	YW	MILK	\$W	\$F	\$G	\$B
10	0.6	62	107	34	63.72	68.42	37.48	99.85

DAM'S PRODUCTION: 1@94 1@104

BW	68
Adj. WW	720/104
Adj. YW	1379/116
Ultrasound	
REA	15.6/107
IMF	5.89/102
Carcass EPDs	
CW	24
Marb.	0.74
REA	0.32
FAT	0.034

9 Roth Active Duty 645

DOB: 01/27/16 Reg. #18698538

LCC New Standard | Bon View New Design 1407
LCC Sunset K3118
R B Active Duty 010
B A Lady 6807 305 | Vermilion Dateline 7078
G D Lady Hi Flyer 302
A A R New Trend | V D A R Shoshone 548
Donna A A R 74
Roth Katinka 2717
Hope Hill Katinka 3066 | D H D Traveler 6807
Harmony Hill Katinka 306

EPD's

CED	BW	WW	YW	MILK	\$W	\$F	\$G	\$B
6	3	48	85	32	44.12	37.9	26.54	80.12

DAM'S PRODUCTION: 7@103 7@112 **Flush Brother to Lots 10 & 11**

BW	85
Adj. WW	788/110
Adj. YW	1319/100
Ultrasound	
REA	14.4/95
IMF	5.57/105
Carcass EPDs	
CW	22
Marb.	0.32
REA	0.27
FAT	-0.005



LOT 9

10 Roth Active Duty 663

DOB: 02/02/16 Reg. #18698540

LCC New Standard | Bon View New Design 1407
LCC Sunset K3118
R B Active Duty 010
B A Lady 6807 305 | Vermilion Dateline 7078
G D Lady Hi Flyer 302
A A R New Trend | V D A R Shoshone 548
Donna A A R 74
Roth Katinka 2717
Hope Hill Katinka 3066 | D H D Traveler 6807
Harmony Hill Katinka 306

EPD's

CED	BW	WW	YW	MILK	\$W	\$F	\$G	\$B
6	3.3	48	85	32	43.09	37.9	26.08	92.03

DAM'S PRODUCTION: 7@103 7@112 **Flush Brother to Lots 9 & 11**

BW	89
Adj. WW	779/108
Adj. YW	1382/100
Ultrasound	
REA	16/105
IMF	5/95
Carcass EPDs	
CW	28
Marb.	0.27
REA	0.38
FAT	-0.02



LOT 10

11 Roth Active Duty 668

DOB: 02/04/16 Reg. #18698543

LCC New Standard | Bon View New Design 1407
 R B Active Duty 010 | LCC Sunset K3118
 B A Lady 6807 305 | Vermilion Dateline 7078
 A A R New Trend | G D Lady Hi Flyer 302
 Roth Katinka 2717 | V D A R Shoshone 548
 Hope Hill Katinka 3066 | Donna A A R 74
 D H D Traveler 6807
 Harmony Hill Katinka 306

EPD's

CED	BW	WW	YW	MILK	\$W	\$F	\$G	\$B
6	3.2	48	85	32	43.43	37.9	26.86	84.64

BW W

DAM'S PRODUCTION: 7@103 7@112 Flush Brother to Lots 9 & 10

BW 84
 Adj. WW 690/100
 Adj. YW 1195/100
Ultrasound
 REA 15.8/100
 IMF 3.95/100
Carcass EPDs
 CW 24
 Marb. 0.3
 REA 0.33
 FAT -0.013

12 Roth Unanimous 609

DOB: 01/21/16 Reg. #18685987

Visiontopline Royal Stockman | Gambles Royal Flush
 Vision Unanimous 1418 | LaGrand Pride 7140
 Vision Edella 665 | Boyd On Target 1083
 V D A R Really Windy 4097 | Vision Edella 337
 Roth Eline 387 | A A R Really Windy 1205
 Roth Eline 061 | VDAR Blackbird 2031
 S A V Pioneer 7301
 Roth Eline 8075

EPD's

CED	BW	WW	YW	MILK	\$W	\$F	\$G	\$B
5	2.4	68	114	16	48.36	77.31	21.21	110.02

BW W

DAM'S PRODUCTION: 2@102 2@100

BW 80
 Adj. WW 692/100
 Adj. YW 1215/102
Ultrasound
 REA 14.4/98
 IMF 5.03/87
Carcass EPDs
 CW 37
 Marb. 0.4
 REA 0.4
 FAT 0.056

13 Roth Unanimous 620

DOB: 01/23/16 Reg. #18695535

Visiontopline Royal Stockman | Gambles Royal Flush
 Vision Unanimous 1418 | LaGrand Pride 7140
 Vision Edella 665 | Boyd On Target 1083
 Roth New Horizon 5055 | Vision Edella 337
 Roth Beauty 0101 | P V F New Horizon 001
 Roth Beauty 4067 | Roth Beauty 3016
 F A R Kruggerand 410H
 Roth Beauty 192

EPD's

CED	BW	WW	YW	MILK	\$W	\$F	\$G	\$B
4	2.4	61	106	23	48.7	67.26	23.95	132.53

BW W

DAM'S PRODUCTION: 5@105 5@102
 PATHFINDER

BW 80
 Adj. WW 760/107
 Adj. YW 1328/110
Ultrasound
 REA 13.7/94
 IMF 6.16/110
Carcass EPDs
 CW 50
 Marb. 0.55
 REA 0.28
 FAT 0.043



LOT 13

14 Roth Unanimous 631

DOB: 01/25/16 Reg. #18695526

Visiontopline Royal Stockman | Gambles Royal Flush
 Vision Unanimous 1418 | LaGrand Pride 7140
 VISION EDELLA 665 | Boyd On Target 1083
 Sitz Upward 307R | Vision Edella 337
 Roth Katinka 1312 | Connealy Onward
 ROTH KATINKA 2717 | Sitz Henrietta Pride 81M
 A A R New Trend
 Hope Hill Katinka 3066

EPD's

CED	BW	WW	YW	MILK	\$W	\$F	\$G	\$B
3	2.9	65	110	29	56.73	71.9	22.58	113.84

BW W

DAM'S PRODUCTION: 3@104 3@109

BW 82
 Adj. WW 796/112
 Adj. YW 1316/109
Ultrasound
 REA 14.7/101
 IMF 5.72/102
Carcass EPDs
 CW 39
 Marb. 0.41
 REA 0.21
 FAT 0.026



LOT 14

15 Roth Unanimous 641

DOB: 01/26/16 Reg. #18685991

Visiontopline Royal Stockman | Gambles Royal Flush
 Vision Unanimous 1418 | LaGrand Pride 7140
 Vision Edella 665 | Boyd On Target 1083
 Connealy Impression | Vision Edella 337
 Roth Pride 241 | Connealy Reflection
 Roth Pride 3021 | Pearl Pammy of Conanga 194
 Roth Holiday Paradox 1040
 Woodhill Pride 8040-1102

EPD's

CED	BW	WW	YW	MILK	\$W	\$F	\$G	\$B
6	1.9	63	104	21	52.36	62.05	29.68	122.96

BW W

DAM'S PRODUCTION: 3@99 3@109
 PATHFINDER

BW 81
 Adj. WW 739/104
 Adj. YW 1342/112
Ultrasound
 REA 13/89
 IMF 6.32/113
Carcass EPDs
 CW 41
 Marb. 0.72
 REA 0.24
 FAT 0.05



16**Roth War Party 602**

DOB: 01/17/16 Reg. #18698440

Connealy Onward | Connealy Lead On
 Werner War Party 2417 | Altune of Conanga 6104
 BAAR USA Lady Jaye 489 | B A R Ext Traveler 205
 | Cra Lady Jaye 608 498 S Easy
 S A V Pioneer 7301 | S A V Final Answer 0035
 | S A V Blackbird 5297
Roth Pride Effie 072
 Roth Pride Effie 7008 | Baldrige Link L29
 | Roth Pride Effie 5014

EPD's

CED	BW	WW	YW	MILK	\$W	\$F	\$G	\$B
6	0.9	57	105	37	58.69	68.3	28.88	134.57

DAM'S PRODUCTION: BW W
 PATHFINDER: 5@97 5@105

BW 75
 Adj. WW 732/103
 Adj. YW 1311/109
Ultrasound
 REA 15/102
 IMF 5.43/97
Carcass EPDs
 CW 48
 Marb. 0.44
 REA 0.86
 FAT 0.043

**LOT 16****17****Roth War Party 608**

DOB: 01/21/16 Reg. #18698432

Connealy Onward | Connealy Lead On
 Werner War Party 2417 | Altune of Conanga 6104
 BAAR USA Lady Jaye 489 | B A R Ext Traveler 205
 | Cra Lady Jaye 608 498 S Easy
 HF Tiger 5T | HF Kodiak 5R
 | HF Echo 84R
Roth Leader 223
 Roth Leader 7035 | G 13 Structure
 | Roth Ranch Leader 3026

EPD's

CED	BW	WW	YW	MILK	\$W	\$F	\$G	\$B
5	1.9	57	103	36	56.58	64.53	29.01	138.34

DAM'S PRODUCTION: BW W
 PATHFINDER: 3@103 3@105

BW 80
 Adj. WW 737/104
 Adj. YW 1289/107
Ultrasound
 REA 15.1/104
 IMF 4.39/78
Carcass EPDs
 CW 51
 Marb. 0.28
 REA 0.84
 FAT -0.032

**18****Roth War Party 624**

DOB: 01/23/16 Reg. #18698433

Connealy Onward | Connealy Lead On
 Werner War Party 2417 | Altune of Conanga 6104
 BAAR USA Lady Jaye 489 | B A R Ext Traveler 205
 | Cra Lady Jaye 608 498 S Easy
 S A V Iron Mountain 8066 | TC Gridiron 258
 | S A V Madame Pride 3249
Roth Wendy 260
 Roth Wendy 8111 | Baldrige Link L29
 | Roth Wendy 6063

EPD's

CED	BW	WW	YW	MILK	\$W	\$F	\$G	\$B
5	1.1	57	104	32	55.1	66.41	36.68	130.34

DAM'S PRODUCTION: BW W
 PATHFINDER: 3@105 3@105

BW 75
 Adj. WW 699/98
 Adj. YW 1214/101
Ultrasound
 REA 14.3/98
 IMF 5.84/105
Carcass EPDs
 CW 41
 Marb. 0.63
 REA 0.64
 FAT 0.021

**LOT 18****19****Roth Black Loch 612**

DOB: 01/21/16 Reg. #18698780

Musgrave Foundation | Kesslers Frontman R001
 Musgrave Black Loch | MCATL Blackcap Juara 29-434
 MCATL Lady Barbara 1448-963 | Connealy Reflection
 | MA Lady Barbara 963
 S A V Pioneer 7301 | S A V Final Anser 0035
 | S A V Blackbird 5297
Roth Forever Lady 049
 Roth Forever Lady 8139 | Baldrige Link L29
 | Roth Forever Lady 120

EPD's

CED	BW	WW	YW	MILK	\$W	\$F	\$G	\$B
11	0.2	51	90	30	52.01	44.82	26.48	81.11

DAM'S PRODUCTION: BW W
 PATHFINDER: 5@104 5@105

BW 79
 Adj. WW 687/97
 Adj. YW 1204/100
Ultrasound
 REA 15.4/106
 IMF 4.97/89
Carcass EPDs
 CW 22
 Marb. 0.47
 REA 0.53
 FAT 0.076

20**Roth Black Loch 643**

DOB: 01/27/16 Reg. #18695644

Musgrave Foundation | Kesslers Frontman R001
 Musgrave Black Loch | MCATL Blackcap Juara 29-434
 MCATL Lady Barbara 1448-963 | Connealy Reflection
 | MA Lady Barbara 963
 V D A R Really Windy 4097 | A A R Really Windy 1205
 | VDAR Balckbird 2031
Roth Miss Forever 4127
 Roth Miss Forever 6167 | S A V 8180 Traveler 004
 | Roth Miss Forever 0426

EPD's

CED	BW	WW	YW	MILK	\$W	\$F	\$G	\$B
16	-0.9	41	76	21	36	26.73	26.26	44.86

DAM'S PRODUCTION: BW W
 PATHFINDER: 1@91 1@88

BW 66
 Adj. WW 552/81
 Adj. YW 1128/100
Ultrasound
 REA 14.7/106
 IMF 4.49/81
Carcass EPDs
 CW 7
 Marb. 0.27
 REA 0.34
 FAT 0.01

21**Roth Black Loch 644**

DOB: 01/27/16 Reg. #18695652

Musgrave Foundation | Kesslers Frontman R001
 Musgrave Black Loch | MCATL Blackcap Juara 29-434
 MCATL Lady Barbara 1448-963 | Connealy Reflection
 MA Lady Barbara 963
 S A V Final Answer 0035 | Sitz Traveler 8180
 Roth Empress 128 | S A V Emulous 8145
 Roth Empress 9066 | F A R Kruggerand 410H
 Roth Empress 016

EPD's

CED	BW	WW	YW	MILK	\$W	\$F	\$G	\$B
15	-1.9	47	85	29	50.24	38.59	29.82	63.6

BW W
 DAM'S PRODUCTION: 4@94 4@101

BW 69
 Adj. WW 655/92
 Adj. YW 1173/97
Ultrasound
 REA 14.7/101
 IMF 5.96/107
Carcass EPDs
 CW 13
 Marb. 0.43
 REA 0.28
 FAT 0.025

22**Roth Waylon 604**

DOB: 01/18/16 Reg. #18698497

GAR-EGL Protege | Rito 112 of 2536 Rito 616
 Baldrige Waylon w34 | L B 6807 Isabel 339
 Baldrige Blackcap T163 | Woodhill Foresight
 Baldrige Blackcap P326
 HF Tiger 5T | HF Kodiak 5R
 Roth Eblinette 342 | HF Echo 84R
 Roth Eblinette 6113 | S A V 8180 Traveler 004
 Roth Eblinette 1172

EPD's

CED	BW	WW	YW	MILK	\$W	\$F	\$G	\$B
4	2.1	60	107	25	49.61	69.88	36	119.76

BW W
 DAM'S PRODUCTION: 2@102 2@111

BW 74
 Adj. WW 678/98
 Adj. YW 1203/102
Ultrasound
 REA 15/101
 IMF 6.11/106
Carcass EPDs
 CW 35
 Marb. 0.58
 REA 0.44
 FAT -0.002

23**Roth Waylon 625**

DOB: 01/24/16 Reg. #18698507

GAR-EGL Protege | Rito 112 of 2536 Rito 616
 Baldrige Waylon w34 | L B 6807 Isabel 339
 Baldrige Blackcap T163 | Woodhill Foresight
 Baldrige Blackcap P326
 D H D Traveler 6807 | Q A S Traveler 23-4
 Black Grove Entense 082 | Bemindful Maid D H D 0807
 BT Everelda Entense 814L | G D A R Rainmaker 340
 Sitz Everelda Entense 1905

EPD's

CED	BW	WW	YW	MILK	\$W	\$F	\$G	\$B
6	0.3	46	82	21	39.38	33.92	43.23	106.7

BW W
 DAM'S PRODUCTION: 3@91 3@101

BW 73
 Adj. WW 685/96
 Adj. YW 1181/98
Ultrasound
 REA 14.4/99
 IMF 5.44/97
Carcass EPDs
 CW 27
 Marb. 0.65
 REA 0.57
 FAT -0.024

**24****Roth Waylon 646**

DOB: 01/27/16 Reg. #18698503

GAR-EGL Protege | Rito 112 of 2536 Rito 616
 Baldrige Waylon w34 | L B 6807 Isabel 339
 Baldrige Blackcap T163 | Woodhill Foresight
 Baldrige Blackcap P326
 Sydgen C C & 7 | S A F Connection
 Roth Eblinette 119 | SydGen Forever Lady 4087
 Roth Eblinette 7012 | TC Freedom 104
 Roth Eblinette 3025

EPD's

CED	BW	WW	YW	MILK	\$W	\$F	\$G	\$B
-2	3.3	57	103	23	42.02	65.13	45.52	174.54

BW W
 DAM'S PRODUCTION: 4@100 4@102

BW 84
 Adj. WW 705/99
 Adj. YW 1297/107
Ultrasound
 REA 15.2/105
 IMF 6.78/122
Carcass EPDs
 CW 65
 Marb. 0.81
 REA 0.71
 FAT -0.052

**25****Roth Waylon 649**

DOB: 01/27/16 Reg. #18702891

GAR-EGL Protege | Rito 112 of 2536 Rito 616
 Baldrige Waylon w34 | L B 6807 Isabel 339
 Baldrige Blackcap T163 | Woodhill Foresight
 Baldrige Blackcap P326
 S A V 8180 Traveler 004 | Sitz Traveler 8180
 Roth Eblinette 6113 | Boyd Forever Lady 8003
 Roth Eblinette 1172 | Famous 7001
 Roth Eblinette 8067

EPD's

CED	BW	WW	YW	MILK	\$W	\$F	\$G	\$B
-1	3	55	96	21	40.07	52.96	33.79	141.62

BW W
 DAM'S PRODUCTION: 7@101 7@100

BW 83
 Adj. WW 690/97
 Adj. YW 1260/105
Ultrasound
 REA 13.7/95
 IMF 6.36/114
Carcass EPDs
 CW 51
 Marb. 0.81
 REA 0.48
 FAT 0.049



26 Roth Waylon 654

DOB: 01/28/16 Reg. #18702883

GAR-EGL Protege | Rito 1/2 of 2536 Rito 616
 L B 6807 Isabel 339

Baldrige Waylon w34
 Baldrige Blackcap T163 | Woodhill Foresight
 Baldrige Blackcap P326

Baldrige Link L29 | Sitz Alliance 6595
 Baldrige Blackbird 22E

Roth Lady Eraline 8127
 Roth Lady Eraline 0427 | GDAR SVF Russ 184B
 Bear MTN Lady Eraline 302

EPD's

CED	BW	WW	YW	MLK	\$W	\$F	\$G	\$B
1	3.7	56	100	25	41.23	59.65	36.63	149.78

DAM'S PRODUCTION: BW W
 PATHFINDER 7@101 7@108

BW	84
Adj. WW	734/103
Adj. YW	1278/106
Ultrasound	
REA	14.3/99
IMF	6.18/111
Carcass EPDs	
CW	54
Marb.	0.84
REA	0.35
FAT	0.014



27 Roth Waylon 667

DOB: 02/03/16 Reg. #1830000

GAR-EGL Protege | Rito 1/2 of 2536 Rito 616
 L B 6807 Isabel 339

Baldrige Waylon w34
 Baldrige Blackcap T163 | Woodhill Foresight
 Baldrige Blackcap P326

Duff New Attraction 6110 | O C C Genesis 87
 C O C Dixie Erica 87

ROTH ROYAL LASS 9062
 Roth Royal Lass 6095 | E... New Design 878
 Roth Lass 4084

EPD's

CED	BW	WW	YW	MLK	\$W	\$F	\$G	\$B
-7	5.3	53	90	22	32.45	43.42	35.39	129.37

DAM'S PRODUCTION: BW W
 6@109 6@99

BW	98
Adj. WW	710/100
Adj. YW	1296/107
Ultrasound	
REA	11.9/83
IMF	5.58/101
Carcass EPDs	
CW	43
Marb.	0.64
REA	0.36
FAT	-0.001

28 Roth Ten x 675

DOB: 02/09/16 Reg. #18685516

A A R TEN X 7008 S A | Mytty In Focus
 A A R Lady Kelton 5551

Roth TEN X 428
 Roth Forever Lady 9035 | LaGrand Sun Dance 4211
 Maple Lane Forever Lady 277

Soo Line Motive 9016 | HF Kodiak 5R
 TLA Beauty 5R

Roth Beauty 313
 Roth Beauty 9037 | Connealy Danny Boy
 Roth Beauty 7011

EPD's

CED	BW	WW	YW	MLK	\$W	\$F	\$G	\$B
6	1	56	99	19	44.04	57.79	14.94	40.37

DAM'S PRODUCTION: BW W
 2@105 2@187

BW	78
Adj. WW	658/95
Adj. YW	1270/97
Ultrasound	
REA	13.4/94
IMF	5.95/104
Carcass EPDs	
CW	8
Marb.	0.08
REA	-0.02
FAT	-0.015

29 Roth Motive 683

DOB: 02/17/16 Reg. #18369677

Soo Line Motive 9016 | HF Kodiak 5R
 TLA Beauty 5R

Roth Motive 3219
 Black Grove Everelda 556 | S V F Bandolier
 Shady Brook Entense 1257

F A R Krugerrand 410H | Krugerrand of Donamere 490
 F A R Erianna 286F

Roth Eblinette 6078
 Roth Eblinette 3025 | B/R New Frontier 095
 Roth Eblinette 1172

EPD's

CED	BW	WW	YW	MLK	\$W	\$F	\$G	\$B
4	3.1	42	78	24	30.54	29.58	19.17	78.55

DAM'S PRODUCTION: BW W
 7@100 7@103

BW	84
Adj. WW	677/95
Adj. YW	1230/100
Ultrasound	
REA	15.4/111
IMF	4.68/85
Carcass EPDs	
CW	25
Marb.	0.16
REA	0.26
FAT	-0.019

30 Roth Motive 698

DOB: 02/25/16 Reg. #18685521

Soo Line Motive 9016 | HF Kodiak 5R
 TLA Beauty 5R

Roth Motive 3219
 Black Grove Everelda 556 | S V F Bandolier
 Shady Brook Entense 1257

Styles Upgrade J59 | Sitz Upward 307R
 Plainview Lassie 71B

Roth Lucy 112
 Roth Lucy 9083 | Roth In Focus 7057
 Roth Freedom 7007

EPD's

CED	BW	WW	YW	MLK	\$W	\$F	\$G	\$B
6	2.3	50	85	29	47.12	36.51	11.39	22.25

DAM'S PRODUCTION: BW W
 3@107 3@103

BW	89
Adj. WW	757/106
Adj. YW	1221/98
Ultrasound	
REA	12.8/92
IMF	5/91
Carcass EPDs	
CW	3
Marb.	0.01
REA	-0.02
FAT	-0.009

31 Roth Motive 6116

DOB: 03/10/16 Reg. #18685524

Soo Line Motive 9016 | HF Kodiak 5R
 TLA Beauty 5R

Roth Motive 3219
 Black Grove Everelda 556 | S V F Bandolier
 Shady Brook Entense 1257

S A V Iron Mountain 8066 | TC Gridiron 258
 S A V Madame Pride 3249

Roth Forever Lady 2105
 Roth Forever Lady 9070 | LaGrand Sun Dance 4211
 Maple Lane Forever Lady 277

EPD's

CED	BW	WW	YW	MLK	\$W	\$F	\$G	\$B
-5	5.4	47	84	19	22.4	36.8	15.64	35.55

DAM'S PRODUCTION: BW W
 3@105 3@88

BW	96
Adj. WW	668/94
Adj. YW	1231/99
Ultrasound	
REA	13.1/97
IMF	5.85/108
Carcass EPDs	
CW	7
Marb.	0.09
REA	0.02
FAT	-0.011

32 Commercial Bull

DOB: 03/21/16

Simmental Bull

Roth In Focus 7057 | Mytty In Focus
 Roth Miss Shippis 563

Roth Rosella Eileenmere 191
 Roth Rosella Eileenmere 8113 | S A F Connection
 Roth Rosella Eileenmere 0375

DAM'S EPD's

CED	BW	WW	YW	MLK	\$W	\$F	\$G	\$B
NA	NA	NA	NA	NA	NA	NA	NA	NA

DAM'S PRODUCTION: BW W
 4@105 4@108

BW	90
Adj. WW	701
Adj. YW	1225/98
Ultrasound	
REA	16.1/103
IMF	3.89/68

Roth Angus FALL BULLS

33 Roth Tour of Duty 5204

DOB: 10/27/15 Reg. # 18685993

Werner War Party 2417
R B Tour of Duty 177
 B A Lady 6807 305
 V D A R Really Windy 4097
Roth Wendy 3216
 Roth Wendy 1302

Connealy Onward
 BAAR USA Lady Jaye 489
 Vermilion Dateline 7078
 G D Lady Hi Flyer 302
 A A R Really Windy 1205
 VDAR Blackbird 2031
 HF Tiger 5T
 Broken Arrow Roth Wendy 833

BW 75
 Adj. WW 724/103
 2/13 Wt. 1565

EPD's									
CED	BW	WW	YW	MILK	\$ W	\$ F	\$ G	\$ B	
10	1.5	67	112	22	57.03	74.23			

DAM'S PRODUCTION: 1@100 1@103

35 Roth Identity 5208

DOB: 10/28/15 Reg. #18685908

Sitz Upward 307R
Koupals B&B Identity
 B&B Erica 605
 S A V Wall Street 7091
Roth Katinka 165
 Roth Katinka 6116

Connealy Onward
 Sitz Henrietta Pride 81M
 G A R Exaltation 3144
 B&B Erica 4064
 S A V Net Worth 4200
 Champion Hill Georgina 2175
 Leachman Right Time
 Roth Katinka 2717

BW 82
 Adj. WW 639/91
 2/13 Wt. 1495

EPD's									
CED	BW	WW	YW	MILK	\$ W	\$ F	\$ G	\$ B	
-1	3.1	51	93	32	44.83	50.3			

DAM'S PRODUCTION: 2@110 2@88

36 Roth Tour of Duty 5209

DOB: 10/28/15 Reg. #18371319

Werner War Party 2417
R B Tour of Duty 177
 B A Lady 6807 305
 D 601 Meatmaker Y198
Roth Lucy 3231
 Roth Lucy 9308

Connealy Onward
 BAAR USA Lady Jaye 489
 Vermilion Dateline 7078
 G D Lady Hi Flyer 302
 Nelsons Meatmaker S601
 SydGen Blckbrd Blossum 2202
 Roth New Horizon 5055
 Roth Lucy 3049

BW 72
 Adj. WW 697/97
 2/13 Wt. 1410

EPD's									
CED	BW	WW	YW	MILK	\$ W	\$ F	\$ G	\$ B	
5	2.5	53	98	28					

DAM'S PRODUCTION: 1@96 1@92

34 Roth Black Granite 5206

DOB: 10/27/15 Reg. #18369665

Connealy Consensus 7229
Connealy Black Granite
 Eura Elga of Conanga 9109
 HARB Pendleton 765 J H
Roth Miss Leader 2316
 Roth Ranch Leader 0320

Connealy Consensus
 Blue Lilly of Conanga 16
 S A V Bismarck 5682
 Eura Cal of Conanga 56B
 S A V Final Answer 0035
 H A R B Black Lady 375 J H
 Roth Traveler 004 6048
 Roth Ranch Leader 5005

BW 73
 Adj. WW 604/86
 2/13 Wt. 1430

EPD's									
CED	BW	WW	YW	MILK	\$ W	\$ F	\$ G	\$ B	
12	0.2	47	86	26	44.1	40.39			

DAM'S PRODUCTION: 2@92 2@105



LOT 35

37 Roth Tour of Duty 5215

DOB: 10/28/15 Reg. #18685998

Werner War Party 2417
R B Tour of Duty 177
 B A Lady 6807 305
 D 601 Meatmaker Y198
Roth Beauty 3250
 Roth Newsline 7036

Connealy Onward
 BAAR USA Lady Jaye 489
 Vermilion Dateline 7078
 G D Lady Hi Flyer 302
 Nelsons Meatmaker S601
 SydGen Blckbrd Blossom 2202
 Lemmon Newsline C804
 Roth Beauty 177

BW 73
 Adj. WW 615/87
 2/13 Wt. 1350

EPD's									
CED	BW	WW	YW	MILK	\$ W	\$ F	\$ G	\$ B	
6	2.3	49	89	25	40.21	44.41			

DAM'S PRODUCTION: 1@98 1@87

38 Roth Tour of Duty

DOB: 10/29/15 Reg. #18685999

Werner War Party 2417

Connealy Onward
BAAR USA Lady Jaye 489

R B Tour of Duty 177

B A Lady 6807 305

Vermilion Dateline 7078
G D Lady Hi Flyer 302

D 601 Meatmaker Y198

Nelsons Meatmaker S601
SydGen Blckbrd Blossom 2202

Roth Lucy 3233

Roth Lucy 0309

Roth In Focus 7057
Roth Lucy 3049

EPD's

CED	BW	WW	YW	MILK	\$W	\$F	\$G	\$B
7	2	52	94	24	42.65	51.42		

BW W

DAM'S PRODUCTION: 1@95 1@89

BW 71

Adj. WW 623/89

2/13 Wt. 1450



39 Roth Unanimous 5216

DOB: 10/29/15 Reg. #18368251

Visiontopline Royal Stockman

Gambles Royal Flush
LaGrand Pride 7140

Vision Unanimous 1418

Vision Edella 665

Boyd On Target 1083
Vision Edella 337

Roth Traveler 004 6048

S A V 8180 Traveler 004
Roth Lady Eraline 3023

Roth Ranch Leader 0320

Roth Ranch Leader 5005

P V F New Horizon 001
Roth Ranch Leader 3026

EPD's

CED	BW	WW	YW	MILK	\$W	\$F	\$G	\$B
4	2.7	58	103	21	42.5	63.81		

BW W

DAM'S PRODUCTION: 3@101 3@100

BW 83

Adj. WW 651/93

2/13 Wt. 1563



LOT 39

40 Roth Confidence 5217

DOB: 10/29/15 Reg. #18687478

Connealy Tobin

Bon View New Design 208
Delia of Conanga 667

Connealy Confidence 0100

Becka Gala of Conanga 8281

Connealy Thunder
Becka Lee of Conanga 37

S A V Iron Mountain 8066

TC Gridiron 258
S A V Madame Pride 3249

Roth Rita 2323

Roth Rita 8153

Roth New Horizon 5055
Roth Rita 4054

EPD's

CED	BW	WW	YW	MILK	\$W	\$F	\$G	\$B
11	0.6	49	87	19	41.82	44.9	27.42	91.71

BW W

DAM'S PRODUCTION: 2@102 2@102

BW 79

Adj. WW 612/87

2/13 Wt. 1375

41 Roth Unanimous 5219

DOB: 10/30/15 Reg. #18368330

Visiontopline Royal Stockman

Gambles Royal Flush
LaGrand Pride 7140

Vision Unanimous 1418

Vision Edella 665

Boyd On Target 1083
Vision Edella 337

P V F New Horizon 001

B/R New Design 323
Hyline Ellen 410

Roth Beauty 6008

Roth Beauty 3009

W C C Special Design L309
Roth Beauty 159

EPD's

CED	BW	WW	YW	MILK	\$W	\$F	\$G	\$B
5	2.5	57	100	26	57.82	58.93	28.34	132.31

BW W

DAM'S PRODUCTION: 6@103 6@106

BW 80

Adj. WW 653/93

2/13 Wt. 1530

42 Roth Identity 5224

DOB: 10/30/15 Reg. #18685907

Sitz Upward 307R

Connealy Onward
Sitz Henrietta Pride 81M

Koupals B&B Identity

B&B Erica 605

G A R Exaltation 3144
B&B Erica 4064

Roth Krugerrand 410H 9306

F A R Krugerrand 410H
Roth Eileenmere 9119

Roth Forever Lady 2326

Roth Forever Lady 8307

Famous 7001
Roth Forever Lady 3059

EPD's

CED	BW	WW	YW	MILK	\$W	\$F	\$G	\$B
3	1.4	53	96	29	49.65	54.39		

BW W

DAM'S PRODUCTION: 2@102 2@94

BW 76

Adj. WW 700/100

2/13 Wt. 1515

43 Roth Black Granite 5225

DOB: 10/30/15 Reg. #18350732

Connealy Consensus 7229

Connealy Consensus
Blue Lilly of Conanga 16

Connealy Black Granite

Eura Elga of Conanga 9109

S A V Bismarck 5682
Eura Cal of Conanga 56B

TC Freedom 104

Connealy Forefront
T C Ruby 9095

M G M A Everelda Entense 801

Shadybrook Ever Entense 547J

Finks 5522-6148
Sitz Everelda Entense 1137

EPD's

CED	BW	WW	YW	MILK	\$W	\$F	\$G	\$B
8	2.1	40	72	23	32.46	20.42	28.61	114.21

BW W

DAM'S PRODUCTION: 5@99 5@94

BW 84

Adj. WW 536/76

2/13 Wt. 1410

44 Roth Tiger 5226

DOB: 10/30/15 Reg. #

HF Tiger 5T

HF Kodiak 5R
HF Echo 84R

Roth Tiger 170

Roth Miss Lucy 8074

Mytty In Focus
North Fork Miss Lucy 7049

ROTH TIGER 170

Roth Everalda Entense 3202

Roth Everalda Entense 6060

HF Tiger 5T
Roth Miss Lucy 8074

Bon View New Design 878
R&R Everelda Entense 011

EPD's

CED	BW	WW	YW	MILK	\$ W	\$ F	\$ G	\$ B
10	.7	37	80	25				

BW W

DAM'S PRODUCTION: 1@101 1@90

BW	74
Adj. WW	572/90
2/13 Wt.	1310

45 Roth Link 5227

DOB: 10/31/15 Reg. #18587089

Baldrige Link L29

Sitz Alliance 6595
Baldrige Blackbird 22E

Roth Link 226

Roth Beauty 7011

TC Freedom 104
Roth Beauty 4027

F A R Krugerrand 410H

Roth Everalda Entense 9019

Roth Everalda Entense 6060

Krugerrand of Donamere 490
F A R Erianna 286F

Bon View New Design 878
R&R Everelda Entense 011

EPD's

CED	BW	WW	YW	MILK	\$ W	\$ F	\$ G	\$ B
7	1.7	48	81	28	46.91	30.77		

BW W

DAM'S PRODUCTION: 5@102 5@103

BW	81
Adj. WW	712/101
2/13 Wt.	1525

46 Roth Link 5229

DOB: 10/31/15 Reg. #18366362

Baldrige Link L29

Sitz Alliance 6595
Baldrige Blackbird 22E

Roth Link 226

Roth Beauty 7011

TC Freedom 104
Roth Beauty 4027

Roth New Horizon 8327

Roth Miss Shipps 1320

Roth Miss Shipps 563

Roth New Horizon 5055
Roth Lady Eraline 3002

F A R Krugerrand 410H
GB Miss Shipps 2093

EPD's

CED	BW	WW	YW	MILK	\$ W	\$ F	\$ G	\$ B
6	2	46	77	27	43.71	25.09		

BW W

DAM'S PRODUCTION: 2@95 2@98

BW	79
Adj. WW	622/98
2/13 Wt.	1455

47 Roth Link 5231

DOB: 10/31/15 Reg. #18587093

Baldrige Link L29

Sitz Alliance 6595
Baldrige Blackbird 22E

Roth Link 226

Roth Beauty 7011

TC Freedom 104
Roth Beauty 4027

Sitz Upward 307R

Roth Katinka 232

Roth Katinka 2717

Connealy Onward
Sitz Henrietta Pride 81M

A A R New Trend
Hope Hill Katinka 3066

EPD's

CED	BW	WW	YW	MILK	\$ W	\$ F	\$ G	\$ B
6	2.1	43	75	33	44.57	23.62		

BW W

DAM'S PRODUCTION: 2@97 2@95

BW	81
Adj. WW	618/88
2/13 Wt.	1350

48 Roth Link 5232

DOB: 11/11/15 Reg. #18587094

Baldrige Link L29

Sitz Alliance 6595
Baldrige Blackbird 22E

Roth Link 226

Roth Beauty 7011

TC Freedom 104
Roth Beauty 4027

Bon View New Design 878

Roth Beauty 5096

Roth Beauty 9521

B/R New Design 036
Bon View Gammer 85

V D A R Lucys Boy
VDAR Beauty 7315

EPD's

CED	BW	WW	YW	MILK	\$ W	\$ F	\$ G	\$ B
5	2.5	42	73	32	41.77	20.81		

BW W

DAM'S PRODUCTION: 8@103 8@109

BW	84
Adj. WW	688/98
2/13 Wt.	1430

49 Roth Link 5238

DOB: 11/15/15 Reg. #18234239

Baldrige Link L29

Sitz Alliance 6595
Baldrige Blackbird 22E

Roth Link 226

Roth Beauty 7011

TC Freedom 104
Roth Beauty 4027

Roth New Horizon 5055

Roth Everalda Entense 8319

R&R Everelda Entense 011

P V F New Horizon 001
Roth Beauty 3016

TC Dividend 963
BT Everelda Entense 474G

EPD's

-CED	BW	WW	YW	MILK	\$ W	\$ F	\$ G	\$ B
49	7	1.4	35	28				

BW W

DAM'S PRODUCTION: 1@93 1@110

BW	79
Adj. WW	640/97
2/13 Wt.	1405

NOTES



Bull Mortality and ASD Infertility Insurance

Option 1:

Bull Mortality and Infertility Coverage

Values:

Not to exceed purchase price

Term:

One Year Policy Term

Premium:

10% of the Purchase Price Premium Fully Earned

\$200 Minimum Premium Per Animal

Testing:

All bulls must be tested, certified and listed in the official catalog of a herd sale

Full Mortality:

100% of the value of the bull in the event of death or humane destruction as a result of a life-threatening injury

Accident, Sickness & Disease (ASD) Infertility:

80% of the value of the bull, less salvage value, in the event of permanent impotency, infertility or being incapable of serving females as a result of an accident, illness, or disease sustained during the policy.

Option 2:

Mortality Coverage

Values:

Not to exceed purchase price

Term:

Renewable One Year Policy Term for

Bulls 6 Months - 7 Years of Age

Premium:

5.5% of the Purchase Price

\$200 Minimum Premium Per Animal

Testing:

Signed statement of health required for all bull for which coverage is requested. Veterinarian examination required on bulls of \$50,000 or more.

Full Mortality:

100% of the value of the bull in the event of death or humane destruction as a result of a life-threatening injury.



MARTIN-TRUDEAU INSURANCE

RAY TRUDEAU

1531 W Elm • P.O. Box 457 Mitchell SD 57301

Office: 605-996-3108 • Cell: 605-770-5170

rt Trudeau@tjfer.com



*Thank you for
attending our sale!*



Cody Roth received the Top Physical Fit Airman Award in his graduating class of 718 members. Cody was honored with carrying the American flag in the Airman's Run at Lockland Air Force Base in Texas for graduation. We are so proud of Cody and all the military personnel – past, present, and future! Thank you for your service!

19th Annual Performance Bull Sale
FRIDAY, MARCH 24, 2017
4:00 PM • AT THE RANCH

Please bring this catalog to the sale.

ROTH

Angus Ranch

42879 277th St.
Freeman, SD 57029

First Class Mail
Time Dated Material

TO: