

ROTH

ANGUS RANCH

20th Annual Sale

FRIDAY, MARCH 23, 2018

4:00 PM • At the Ranch, Freeman, SD



WWW.ROTHANGUSRANCH.COM

This sale will be broadcast live on the internet.
DVAuction
Broadcasting Real-Time Auctions
Real time bidding & proxy bidding available.

ROTH

ANGUS RANCH

20th Annual Sale

FRI., MARCH 23, 2018

4:00 PM • At the Ranch Freeman, SD



Directions:

From Jct. 44 & 37 Parkston, 19 miles east to 429th Ave. then 2 south or, from Jct. 44 & 81, 10 west to 429th Ave. then 2 mi. south.

Sale Day Phones:

Craig(605) 359-9220
Cody(605) 999-8670
Heidi(605) 359-7827

Auctioneer:

Dustin Carter, Vermillion, South Dakota(712) 898-9972

Livestock Press Representatives:

Jeff Kapperman, *Tri-State Neighbor*.....(605) 940-5104
Donnie Leddy, *Cattle Business Weekly*.....(605) 695-0113
Rod Geppert, *American Angus Association*.....(605) 295-3673

Delivery: Roth Angus offers free delivery on bulls within 250 miles of Freeman or take advantage of our special Sale Day Only - Haul Your Own Discount, & receive \$50 per bull discount if you bring your trailer sale day and haul your bull(s) home.

Inspection: Bulls may be viewed anytime prior to the sale at the ranch.

Volume Discount: A 5% discount will be given on the purchase of 5 or more bulls.

Herd Health: All cattle will be accompanied with proper health papers. All bulls selling have been fertility tested by the herd veterinarian, Dr. Greg Ver Heul of Sioux Nation. All bulls have received Vira Shield, Lepto and 7-way Clostridium. They are immunized for both Type 1 and Type 2 BVD, Rednose, Para Influenza and BRSV. All bulls selling have tested negative for BVD and Johnes.

Supplement Sheet: Scrotal, pelvic, hip height and updated Epd's will be available online after March 14th, and a handout will be available sale day.

Liability: All persons attending this sale do so at their own risk.

Terms and Conditions: The terms of the sale are cash and all settlements must be made at the close of the auction. All cattle will sell according to the terms and conditions of the American Angus Association.

Interest: We retain one-third interest in all bulls selling unless specified otherwise.

Cattlemen,

Welcome to our 20th Annual Production sale. Lots of changes have been made though the years from holding our first sales at the former Bon View Farms then to Mitchell Livestock and now at our place. There have been many more changes over the last 20 years too numerous to mention but all to better the cow herd, the bulls and their environment and genetics, and the customers' needs. My family feels truly blessed with all the friendships made along the way, and we look forward to meeting new ones in the future. It is with your interest and support of our program that strives us to continue working hard for you to have success and add value to your herd and with that we say thank you.

We are offering 49 Yearling and 9 Fall Bulls that have been performance tested and evaluated for breeding soundness. We have recorded data on each bull in all areas including calving, weaning, yearling, carcass, ultrasound, hip height, pelvic and scrotal measurements. This year we began using Neogen GeneSeek, a DNA test on our selected top bulls to enhance their EPDs.

Within our operation, we specifically breed our cows to produce easy calving, rapid growing progeny that also exhibits outstanding maternal traits. Docility and structural soundness is of upmost importance as well as phenotype of each offspring produced. In addition to that we believe that each animal needs to have the ability to perform in the feedlot and on the rail.

We would enjoy having you join us on Friday, March 23rd @ 4:00 p.m. for our video auction. Immediately following the auction, please stay for our post sale social and Angus supper.

*Thanks & God Bless,
The Roth's*



Craig Roth
42879 277th St. • Freeman, SD 57029
(605) 925-4650 • Cell (605) 359-9220



WWW.ROTHANGUSRANCH.COM

... REFERENCE SIRES ...

SIRE A S A V RENOWN 3439
01/07/13 Reg# 17633839 Tattoo: 3439

#R R RITO 707
#RITO 707 OF IDEAL 3407 7075
IDEAL 3407 OF 1418 076

#S A V 8180 TRAVELER 004
S A V BLACKCAP MAY 4136
#S A V MAY 2397



CED	BW	WW	YW	Milk	CW	Marb.	REA	FAT	\$ W	\$ F	\$ G	\$ B
1	2.8	72	125	19	42	-0.01	0.76	0.023	58.43	71.72	9.39	91.11

SIRE B VISION UNANIMOUS 1418
01/22/11 Reg# 16992096 Tattoo: 1418

GAMBLES ROYAL FLUSH
VISIONTOPLINE ROYAL STOCKMAN
IDEAL 3407 OF 1418 076

#BOYD ON TARGET 1083
#VISION EDELLA 665
VISION EDELLA 337



CED	BW	WW	YW	Milk	CW	Marb.	REA	FAT	\$ W	\$ F	\$ G	\$ B
2	3.3	74	128	15	44	0.59	0.327	0.004	56.85	93.44	33.34	137.06

SIRE C CONNEALY BLACK GRANITE
01/13/11 Reg# 17028963 Tattoo: 133

#CONNEALY CONSENSUS
#CONNEALY CONSENSUS 7229
BLUE LILLY OF CONANGA 16

#S A V BISMARCK 5682
#EURA ELGA OF CONANGA 9109
EURA CAL OF CONANGA 56B



CED	BW	WW	YW	Milk	CW	Marb.	REA	FAT	\$ W	\$ F	\$ G	\$ B
14	0.3	58	98	21	40	0.38	0.72	0.016	68.06	62.22	30.45	131.33

SIRE D BARSTOW BANKROLL B73
02/14/14 Reg# 18036327 Tattoo: B73

#SITZ DASH 1027
#BARSTOW CASH
BARSTOW QUEEN W16

#CAR EFFICIENT 534
BARSTOW MISS DIANNA Z25
#BARSTOW MISS DIANNA X128



CED	BW	WW	YW	Milk	CW	Marb.	REA	FAT	\$ W	\$ F	\$ G	\$ B
16	-2.6	61	127	24	55	0.38	0.364	0.001	58.24	92.16	28.26	141.76

SIRE E VBR CHIEFTAIN 3W21
02/06/13 Reg# 17733575 Tattoo: 3W21

#CONNEALY ONWARD
#WERNER WAR PARTY 2417
BAAR USA LADY JAYE 489

#B/R NEW DAY 454
VBR 1ND9 OF 611 NEW DAY
VBR 611 TOTAL OF 428



CED	BW	WW	YW	Milk	CW	Marb.	REA	FAT	\$ W	\$ F	\$ G	\$ B
0	3.1	76	131	26	57	0.71	0.69	0.023	72.60	85.86	38.14	151.35

SIRE F BALDRIDGE JENNINGS Z064
02/24/12 Reg# 17314954 Tattoo: Z064

#GAR-EGL PROTEGE
BALDRIDGE WAYLON W34
BALDRIDGE BLACKCAP T163

BALDRIDGE RAPID R31
BALDRIDGE MAVERICK T43
BALDRIDGE MAVERICK R39



CED	BW	WW	YW	Milk	CW	Marb.	REA	FAT	\$ W	\$ F	\$ G	\$ B
-4	2.2	67	114	15	51	1.05	0.44	0.006	55.04	68.94	46.40	154.23

SIRE G DDA DAMERON NORTHERN LIGHT
03/30/12 Reg# 17294559 Tattoo: 1220

#S A V BISMARCK 5682#
#S A V BRILLIANCE 8077
S A V BLACKCAP MAY 5270

EXG RS FIRST RATE S903 R3
DAMERON NORTHERN MISS 0109
DAMERON NORTHERN MISS 3114



CED	BW	WW	YW	Milk	CW	Marb.	REA	FAT	\$ W	\$ F	\$ G	\$ B
5	3.0	70	121	26	53	0.18	0.57	0.004	68.53	74.89	17.64	125.63

SIRE H HILLTOP OPEN RANGE 2279
02/20/12 Reg# 17427037 Tattoo: 2279

#SITZ IDENTITY 2575
#SITZ IDENTITY 7828
#SITZ BEEBE QUEEN 1956

#SITZ ALLIANCE 7544
HT HAZEL GP 97
HILLTOP HAZEL GP 7120



CED	BW	WW	YW	Milk	CW	Marb.	REA	FAT	\$ W	\$ F	\$ G	\$ B
6	1.3	74	149	25	67	0.44	0.63	0.034	64.61	119.11	23.97	153.30

... YEARLING ANGUS BULLS ...



ROTH ANGUS 1 01/10/17 Reg# 19022546 Tattoo: 735
 Rito 707 of Ideal 3407 7075
S A V RENOWN 3439 S A V BLACKCAP MAY 4136
 #HF TIGER 5T
#ROTH LEADER 223 ROTH LEADER 7035

ANGUSGS			Ultrasound		Carcass EPD's				
BW	Adj. WW	Adj. YW	REA	IMF	CW	Marb.	REA	FAT	
88	712/105	1330/102	15.7/106	4.78/110	38	0.16	0.62	0.008	
EPD's	CED	BW	WW	YW	MILK	\$ W	\$ F	\$ G	\$ B
	2	3.0	65	114	24	51.94	78.35	19.77	113.25

Dam's Production: BW 4 @ 103 WW 4 @ 107

ROTH ANGUS 2 01/13/17 Reg# 19022552 Tattoo: 749
 Rito 707 of Ideal 3407 7075
S A V RENOWN 3439 S A V BLACKCAP MAY 4136
 #SITZ UPWARD 307R
ROTH KATINKA 1312 ROTH KATINKA 2717

ANGUSGS			Ultrasound		Carcass EPD's				
BW	Adj. WW	Adj. YW	REA	IMF	CW	Marb.	REA	FAT	
80	708/105	1297/100	14.9/101	5.11/118	46	0.24	0.68	0.016	
EPD's	CED	BW	WW	YW	MILK	\$ W	\$ F	\$ G	\$ B
	6	1.9	59	102	28	55.61	60.4	22.36	126.8

Dam's Production: BW 4 @ 101 WW 4 @ 108



ROTH ANGUS 3 01/13/17 Reg# 19022562 Tattoo: 751
 Rito 707 of Ideal 3407 7075
S A V RENOWN 3439 S A V BLACKCAP MAY 4136
 #S A V 8180 TRAVELER 004
ROTH PRIDE 078 ROTH PRIDE 7018

ANGUSGS			Ultrasound		Carcass EPD's				
BW	Adj. WW	Adj. YW	REA	IMF	CW	Marb.	REA	FAT	
78	657/97	1217/94	15.0/101	3.78/87	23	0.12	0.35	0.024	
EPD's	CED	BW	WW	YW	MILK	\$ W	\$ F	\$ G	\$ B
	6	1.3	47	81	21	40.51	31.16	15.28	68.58

Dam's Production: BW 5 @ 94 WW 5 @ 96 **Heifer Bull**



ROTH ANGUS 4 01/13/17 Reg# 19022550 Tattoo: 755
 Rito 707 of Ideal 3407 7075
S A V RENOWN 3439 S A V BLACKCAP MAY 4136
 #CONNEALY IMPRESSION
#ROTH PRIDE 241 ROTH PRIDE 3021

ANGUSGS			Ultrasound		Carcass EPD's				
BW	Adj. WW	Adj. YW	REA	IMF	CW	Marb.	REA	FAT	
90	644/95	1295/100	14.6/99	3.70/85	29	0.22	0.36	0.024	
EPD's	CED	BW	WW	YW	MILK	\$ W	\$ F	\$ G	\$ B
	3	2.9	60	106	20	43.88	67.04	19.28	92.16

Dam's Production: BW 4 @ 101 WW 4 @ 105

ROTH ANGUS ROTH RENOWN 767

5

01/15/17

Reg# 19022563

Tattoo: 767

S A V RENOWN 3439

Rito 707 of Ideal 3407 7075
S A V BLACKCAP MAY 4136

#R R RITO 707
IDEAL 3407 OF 1418 076
#S A V 8180 TRAVELER 004
#S A V MAY 2397
#P V F NEW HORIZON 001
ROTH BEAUTY 3016
#F A R KRUGERRAND 410H
#ROTH BEAUTY 192

#ROTH BEAUTY 0101

ROTH NEW HORIZON 5055
ROTH BEAUTY 4067



Ultrasound			Carcass EPD's					
BW	Adj. WW	Adj. YW	REA	IMF	CW	Marb.	REA	FAT
97	687/102	1405/108	15.9/107	4.01/92	41	0.13	0.56	0.009

EPD's	CED	BW	WW	YW	MILK	\$ W	\$ F	\$ G	\$ B
-3	5.0	63	121	22	36.51	93.14	16.76	118.98	

Dam's Production: $\frac{BW}{6 @ 107}$ $\frac{WW}{6 @ 105}$



Let 5

ROTH ANGUS ROTH RENOWN 770

6

01/18/17

Reg# 19022556

Tattoo: 770

S A V RENOWN 3439

Rito 707 of Ideal 3407 7075
S A V BLACKCAP MAY 4136

#R R RITO 707
IDEAL 3407 OF 1418 076
#S A V 8180 TRAVELER 004
#S A V MAY 2397
#S A F CONNECTION
SYDGEN FOREVER LADY 4087
#TC FREEDOM 104
ROTH EBLINETTE 3025

ROTH EBLINETTE 119

#SYDGEN C C & 7
ROTH EBLINETTE 7012



Ultrasound			Carcass EPD's					
BW	Adj. WW	Adj. YW	REA	IMF	CW	Marb.	REA	FAT
88	698/103	1426/110	17.7/120	4.26/98	50	0.17	0.91	-0.016

EPD's	CED	BW	WW	YW	MILK	\$ W	\$ F	\$ G	\$ B
3	3.4	67	128	23	49.08	96.59	23.92	136.43	

Dam's Production: $\frac{BW}{5 @ 101}$ $\frac{WW}{5 @ 102}$



Let 6

ROTH ANGUS ROTH RENOWN 780

7

01/18/17

Reg# 19022568

Tattoo: 780

S A V RENOWN 3439

Rito 707 of Ideal 3407 7075
S A V BLACKCAP MAY 4136

#R R RITO 707
IDEAL 3407 OF 1418 076
#S A V 8180 TRAVELER 004
#S A V MAY 2397
#G A R GRID MAKER
#TC PRIDE 8067
A A R RAMBLER 356
#J R DIXIE ERICA 105D

#ROTH DIXIE ERICA 9053

#TC GRID TOPPER 355
#J R DIXIE ERICA 379H



Ultrasound			Carcass EPD's					
BW	Adj. WW	Adj. YW	REA	IMF	CW	Marb.	REA	FAT
89	741/110	1447/112	16.0/108	2.79/64	55	-0.18	0.82	-0.031

EPD's	CED	BW	WW	YW	MILK	\$ W	\$ F	\$ G	\$ B
0	2.4	65	117	30	67.07	80.95	2.42	122.49	

Dam's Production: $\frac{BW}{7 @ 104}$ $\frac{WW}{7 @ 113}$



Let 7

ROTH ANGUS ROTH RENOWN 787

8

01/21/17

Reg# 19022548

Tattoo: 787

S A V RENOWN 3439

Rito 707 of Ideal 3407 7075
S A V BLACKCAP MAY 4136

#R R RITO 707
IDEAL 3407 OF 1418 076
#S A V 8180 TRAVELER 004
#S A V MAY 2397
#SITZ UPWARD 307R
PLAINVIEW LASSIE 71B
#H A R B WINDY 702 JH
ROTH ROSELLA EILEENMERE 0375

ROTH ROSELIA EILEENMERE 252

#STYLES UPGRADE J59
ROTH ROSELLA EILEENMERE 042

Ultrasound			Carcass EPD's					
BW	Adj. WW	Adj. YW	REA	IMF	CW	Marb.	REA	FAT
84	755/112	1136/88	14.2/96	4.89/113	13	0.07	0.34	0.015

EPD's	CED	BW	WW	YW	MILK	\$ W	\$ F	\$ G	\$ B
5	0.8	58	84	21	57.19	28.96	15.19	47.01	

Dam's Production: $\frac{BW}{3 @ 105}$ $\frac{WW}{3 @ 104}$

ROTH ANGUS ROTH RENOWN 789

9

01/22/17

Reg# 19022577

Tattoo: 789

S A V RENOWN 3439

Rito 707 of Ideal 3407 7075
S A V BLACKCAP MAY 4136

#R R RITO 707
IDEAL 3407 OF 1418 076
#S A V 8180 TRAVELER 004
#S A V MAY 2397
#SITZ TRAVELER 8180
BOYD FOREVER LADY 8003
#FAMOUS 7001
ROTH EBLINETTE 8067

ROTH EBLINETTE 6113

#S A V 8180 TRAVELER 004
ROTH EBLINETTE 1172

Ultrasound			Carcass EPD's					
BW	Adj. WW	Adj. YW	REA	IMF	CW	Marb.	REA	FAT
88	683/101	1304/100	14.2/96	5.21/120	35	0.26	0.42	0.02

EPD's	CED	BW	WW	YW	MILK	\$ W	\$ F	\$ G	\$ B
1	3.0	61	108	21	45.29	70.03	21.46	107.32	

Dam's Production: $\frac{BW}{8 @ 101}$ $\frac{WW}{8 @ 100}$

ROTH ANGUS **ROTH UNANIMOUS 732**

10

01/09/17

Reg# 19020214

Tattoo: 732

Visiontopline Royal Stockman

VISION UNANIMOUS 1418

#VISION EDELLA 665

JINDRA DOUBLE VISION

ROTH BEAUTY 485

ROTH BEAUTY 9048

GAMBLES ROYAL FLUSH
LAGRAND PRIDE 7140
#BOYD ON TARGET 1083
VISION EDELLA 337
#CONNEALY REFLECTION
HOFF RACHEL 8312 405
#TC GRID TOPPER 355
ROTH BEAUTY 4048

Ultrasound			Carcass EPD's					
BW	Adj. WW	Adj. YW	REA	IMF	CW	Marb.	REA	FAT
80	641/95	1235/96	13.5/90	4.56/99	36	0.57	0.31	0.009

EPD's	CED	BW	WW	YW	MILK	\$ W	\$ F	\$ G	\$ B
	5	2.3	61	108	20	46.57	70.03	34.2	122.12

Dam's Production: BW 2 @ 96 WW 2 @ 103

ROTH ANGUS **ROTH UNANIMOUS 745**

12

01/12/17

Reg# 19020215

Tattoo: 745

Visiontopline Royal Stockman

VISION UNANIMOUS 1418

#VISION EDELLA 665

#A A R TEN X 7008 S A

ROTH LADY ERALINE 444

#ROTH LADY ERALINE 8127

GAMBLES ROYAL FLUSH
LAGRAND PRIDE 7140
#BOYD ON TARGET 1083
VISION EDELLA 337
#MYTTY IN FOCUS
#A A R LADY KELTON 5551
BALDRIDGE LINK L29
ROTH LADY ERALINE 0427

Ultrasound			Carcass EPD's					
BW	Adj. WW	Adj. YW	REA	IMF	CW	Marb.	REA	FAT
84	706/105	1346/105	16.5/110	4.04/87	50	0.26	0.43	-0.038

EPD's	CED	BW	WW	YW	MILK	\$ W	\$ F	\$ G	\$ B
	8	1.8	69	119	15	60.85	91.16	25.04	147.14

Dam's Production: BW 2 @ 98 WW 2 @ 107

ROTH ANGUS **ROTH UNANIMOUS 739**

11

01/11/17

Reg# 19020260

Tattoo: 739

Visiontopline Royal Stockman

VISION UNANIMOUS 1418

#VISION EDELLA 665

K F WACKER 273

ROTH PRIMROSE 5196

ROTH PRIMROSE LADY 1312

GAMBLES ROYAL FLUSH
LAGRAND PRIDE 7140
#BOYD ON TARGET 1083
VISION EDELLA 337
#B C C BUSHWACKER 41-93
#BON VIEW GAMMER 223
#ROCKN D AMBUSH 1531
S V F PRIMROSE LADY 194H

Ultrasound			Carcass EPD's					
BW	Adj. WW	Adj. YW	REA	IMF	CW	Marb.	REA	FAT
80	653/97	1229/95	12.7/86	4.77/110	17	0.34	0.05	0.002

EPD's	CED	BW	WW	YW	MILK	\$ W	\$ F	\$ G	\$ B
	4	1.7	52	85	19	43.41	34.77	26.01	67.21

Dam's Production: BW 4 @ 95 WW 4 @ 106 **Use on Larger Framed Heifers**



ROTH ANGUS **ROTH UNANIMOUS 753**

13

01/13/17

Reg# 19020225

Tattoo: 753

Visiontopline Royal Stockman

VISION UNANIMOUS 1418

#VISION EDELLA 665

#STYLES UPGRADE J59

ROTH LUCY 112

ROTH LUCY 9083

GAMBLES ROYAL FLUSH
LAGRAND PRIDE 7140
#BOYD ON TARGET 1083
VISION EDELLA 337
#SITZ UPWARD 307R
PLAINVIEW LASSIE 71B
ROTH IN FOCUS 7057
ROTH FREEDOM 7007

Ultrasound			Carcass EPD's					
BW	Adj. WW	Adj. YW	REA	IMF	CW	Marb.	REA	FAT
80	651/96	1286/99	13.3/90	5.57/128	30	0.63	0.27	0.002

EPD's	CED	BW	WW	YW	MILK	\$ W	\$ F	\$ G	\$ B
	7	1.1	58	102	20	47.89	61.11	37.83	111.62

Dam's Production: BW 4 @ 104 WW 4 @ 101

ROTH ANGUS **ROTH UNANIMOUS 754**

14

01/13/17

Reg# 19020216

Tattoo: 754

Visiontopline Royal Stockman

VISION UNANIMOUS 1418

#VISION EDELLA 665

ROTH TIGER 115

ROTH KATINKA 489

ROTH KATINKA 2717

GAMBLES ROYAL FLUSH
LAGRAND PRIDE 7140
#BOYD ON TARGET 1083
VISION EDELLA 337
#HF TIGER 5T
ROTH KINDNES EVIDENCE 5015
#A A R NEW TREND
HOPE HILL KATINKA 3066

Ultrasound			Carcass EPD's					
BW	Adj. WW	Adj. YW	REA	IMF	CW	Marb.	REA	FAT
98	611/91	1232/96	14.7/98	4.09/89	20	0.27	0.16	-0.002

EPD's	CED	BW	WW	YW	MILK	\$ W	\$ F	\$ G	\$ B
	-2	5.6	55	100	21	30.11	59.57	24.07	76.17

Dam's Production: BW 2 @ 113 WW 2 @ 101

ROTH ANGUS **REGISTRATION PENDING**

15

01/14/17

Reg# Pending

Tattoo: 762

Visiontopline Royal Stockman

VISION UNANIMOUS 1418

#VISION EDELLA 665

ROTH 24J 7023

ROTH FOREVER LADY 0148

ROTH FOREVER LADY 120

GAMBLES ROYAL FLUSH
LAGRAND PRIDE 7140
#BOYD ON TARGET 1083
VISION EDELLA 337
#BT RIGHT TIME 24J
ROTH PRIMROSE 2421
#RITO 2100 G D A R
PAUL BALDRIDGE FOREVR LDY 428

Ultrasound			Carcass EPD's					
BW	Adj. WW	Adj. YW	REA	IMF	CW	Marb.	REA	FAT
86	676/100	1298/100	15.0/100	3.08/100				

EPD's	CED	BW	WW	YW	MILK	\$ W	\$ F	\$ G	\$ B

Dam's Production: BW 5 @ 100 WW 5 @ 105

ROTH ANGUS ROTH UNANIMOUS 763

16

01/14/17

Reg# 19020226

Tattoo: 763

Visiontopline Royal Stockman

VISION UNANIMOUS 1418

#VISION EDELLA 665

#SYDGEN C C & 7

ROTH WENDY 125

ROTH WENDY 8009

GAMBLES ROYAL FLUSH
LAGRAND PRIDE 7140
#BOYD ON TARGET 1083
VISION EDELLA 337
#S A F CONNECTION
SYDGEN FOREVER LADY 4087
BALDRIDGE LINK L29
ROTH WENDY 5036

ANGUSGS
Powered by Superior Genetics

			Ultrasound		Carcass EPD's			
BW	Adj. WW	Adj. YW	REA	IMF	CW	Marb.	REA	FAT
90	739/109	1371/105	13.5/91	5.38/124	29	0.39	0.1	0.009

EPD's	CED	BW	WW	YW	MILK	\$ W	\$ F	\$ G	\$ B
	5	2.8	68	119	26	56.99	85.61	25.58	102.54

Dam's Production: BW WW
4 @ 103 4 @ 107



Lot 16



Lot 17

ROTH ANGUS ROTH UNANIMOUS 781

17

01/18/17

Reg# 19020229

Tattoo: 781

Visiontopline Royal Stockman

VISION UNANIMOUS 1418

#VISION EDELLA 665

S A V WALL STREET 7091

ROTH BANDOLIER 037

ROTH BANDOLIER 4031

GAMBLES ROYAL FLUSH
LAGRAND PRIDE 7140
#BOYD ON TARGET 1083
VISION EDELLA 337

#S A V NET WORTH 4200
CHAMPION HILL GEORGINA 2175
#VERMILION DATELINE 7078
ROTH BANDOLIER 9086

			Ultrasound		Carcass EPD's			
BW	Adj. WW	Adj. YW	REA	IMF	CW	Marb.	REA	FAT
88	676/100	1262/97	13.7/93	3.47/80	24	0.34	0.36	0.009

EPD's	CED	BW	WW	YW	MILK	\$ W	\$ F	\$ G	\$ B
	-1	4.0	59	100	19	40	56.74	27.87	87.87

Dam's Production: BW WW
5 @ 100 5 @ 102

ROTH ANGUS ROTH UNANIMOUS 790

19

01/22/17

Reg# 19020222

Tattoo: 790

Visiontopline Royal Stockman

VISION UNANIMOUS 1418

#VISION EDELLA 665

#S A V IRON MOUNTAIN 8066

ROTH FOREVER LADY 2105

ROTH FOREVER LADY 9070

GAMBLES ROYAL FLUSH
LAGRAND PRIDE 7140
#BOYD ON TARGET 1083
VISION EDELLA 337

#TC GRIDIRON 258
S A V MADAME PRIDE 3249
#LAGRAND SUN DANCE 4211
MAPLE LANE FOREVER LADY 277

			Ultrasound		Carcass EPD's			
BW	Adj. WW	Adj. YW	REA	IMF	CW	Marb.	REA	FAT
91	648/96	1224/94	15.6/105	3.18/73	33	0.37	0.4	-0.017

EPD's	CED	BW	WW	YW	MILK	\$ W	\$ F	\$ G	\$ B
	-3	4.5	60	105	11	28.02	65.2	30.74	111.63

Dam's Production: BW WW
4 @ 105 4 @ 90

ROTH ANGUS ROTH UNANIMOUS 785

18

01/21/17

Reg# 19020256

Tattoo: 785

Visiontopline Royal Stockman

VISION UNANIMOUS 1418

#VISION EDELLA 665

ROTH NEW HORIZON 5055

ROTH BARBARA 8152

ROTH BARBARA 2256

GAMBLES ROYAL FLUSH
LAGRAND PRIDE 7140
#BOYD ON TARGET 1083
VISION EDELLA 337
#P V F NEW HORIZON 001
ROTH BEAUTY 3016
#ROTHS MILLCREEK UNIQUE
ROTH BARBARA 0434

ANGUSGS
Powered by Superior Genetics

			Ultrasound		Carcass EPD's			
BW	Adj. WW	Adj. YW	REA	IMF	CW	Marb.	REA	FAT
92	689/102	1364/105	13.5/91	4.67/108	44	0.45	0.35	-0.009

EPD's	CED	BW	WW	YW	MILK	\$ W	\$ F	\$ G	\$ B
	-2	4.6	64	116	19	38.5	82.86	30.7	135.97

Dam's Production: BW WW
7 @ 111 7 @ 103

ROTH ANGUS ROTH BLACK GRANITE 722

20

01/02/17

Reg# 19022430

Tattoo: 722

#Connealy Consensus 7229

CONNEALY BLACK GRANITE

#EURA ELGA OF CONANGA 9109

#BON VIEW NEW DESIGN 878

ROTH BEAUTY 4108

ROTH BEAUTY 157

#CONNEALY CONSENSUS
BLUE LILLY OF CONANGA 16
#S A V BISMARCK 5682
EURA CAL OF CONANGA 568
#B/R NEW DESIGN 036
BON VIEW GAMMER 85
THREE TREES EVERREADY C55D
FSHK BEAUTY 404

			Ultrasound		Carcass EPD's			
BW	Adj. WW	Adj. YW	REA	IMF	CW	Marb.	REA	FAT
80	609/85	1215/92	13.9/91	4.55/97	16	0.33	0.28	0.004

EPD's	CED	BW	WW	YW	MILK	\$ W	\$ F	\$ G	\$ B
	10	0.4	36	65	22	32.24	11.03	28.44	64

Dam's Production: BW WW
9 @ 100 9 @ 95 **Heifer Bull**



Hanging out with lot 7.



ROTH ANGUS 22 01/13/17 Reg# 19022371 Tattoo: 750

CONNEALY BLACK GRANITE
 #Connealy Consensus 7229
 #EURA ELGA OF CONANGA 9109
 #CONNEALY CONSENSUS
 BLUE LILLY OF CONANGA 16
 #S A V BISMARCK 5682
 EURA CAL OF CONANGA 56B
 #HF TIGER 5T
 ROTH TIGER 115
ROTH BEAUTY 3212
 ROTH BEAUTY 6008
 #P V F NEW HORIZON 001
 ROTH BEAUTY 3009

BW Adj. WW Adj. YW			Ultrasound		Carcass EPD's			
BW	Adj. WW	Adj. YW	REA	IMF	CW	Marb.	REA	FAT
81	654/97	1292/100	15.7/106	4.35/100	36	0.3	0.52	0.031

EPD's	CED	BW	WW	YW	MILK	\$ W	\$ F	\$ G	\$ B
10	1.2	53	95	23	46.21	51.89	23.26	107.57	

Dam's Production: ^{BW} 2 @ 97 ^{WW} 2 @ 101 **Heifer Bull**

ROTH ANGUS 24 01/14/17 Reg# 19022389 Tattoo: 764

CONNEALY BLACK GRANITE
 #Connealy Consensus 7229
 #EURA ELGA OF CONANGA 9109
 #CONNEALY CONSENSUS
 BLUE LILLY OF CONANGA 16
 #S A V BISMARCK 5682
 EURA CAL OF CONANGA 56B
 HF KODIAK 5R
 HF ECHO 84R
 #F A R KRUGERRAND 410H
 ROTH EMPRESS 016
 #HF TIGER 5T
ROTH EMPRESS 320
 ROTH EMPRESS 6059

BW Adj. WW Adj. YW			Ultrasound		Carcass EPD's			
BW	Adj. WW	Adj. YW	REA	IMF	CW	Marb.	REA	FAT
80	696/103	1334/103	17.1/116	3.77/87	27	0.14	0.5	0.006

EPD's	CED	BW	WW	YW	MILK	\$ W	\$ F	\$ G	\$ B
12	0.2	58	102	23	52.51	61.11	19.31	86.59	

Dam's Production: ^{BW} 3 @ 101 ^{WW} 3 @ 103 **Heifer Bull**

ROTH ANGUS 21 01/11/17 Reg# 19022396 Tattoo: 741

CONNEALY BLACK GRANITE
 #Connealy Consensus 7229
 #EURA ELGA OF CONANGA 9109
 #CONNEALY CONSENSUS
 BLUE LILLY OF CONANGA 16
 #S A V BISMARCK 5682
 EURA CAL OF CONANGA 56B
 #SITZ UPWARD 307R
 PLAINVIEW LASSIE 71B
 ROTH NEW HORIZON 5055
 ROTH BEAUTY 5059
 #STYLES UPGRADE J59
ROTH BEAUTY 239
 ROTH BEAUTY 079

BW Adj. WW Adj. YW			Ultrasound		Carcass EPD's			
BW	Adj. WW	Adj. YW	REA	IMF	CW	Marb.	REA	FAT
80	602/89	1228/95	16.7/113	3.09/71	25	0.25	0.7	0.009

EPD's	CED	BW	WW	YW	MILK	\$ W	\$ F	\$ G	\$ B
12	0.2	48	87	21	41.26	41.04	27.54	86.74	

Dam's Production: ^{BW} 2 @ 106 ^{WW} 2 @ 92 **Heifer Bull**

ROTH ANGUS 23 01/14/17 Reg# 19022367 Tattoo: 760

CONNEALY BLACK GRANITE
 #Connealy Consensus 7229
 #EURA ELGA OF CONANGA 9109
 #CONNEALY CONSENSUS
 BLUE LILLY OF CONANGA 16
 #S A V BISMARCK 5682
 EURA CAL OF CONANGA 56B
 #HF TIGER 5T
 ROTH TIGER 170
ROTH KINDNESS EVIDENCE 4109
 ROTH KINDNESS EVIDENCE 6002
 #S A F CONNECTION
 ROTH KINDNESS EVIDENCE 4016

BW Adj. WW Adj. YW			Ultrasound		Carcass EPD's			
BW	Adj. WW	Adj. YW	REA	IMF	CW	Marb.	REA	FAT
85	734/109	1340/104	17.2/115	5.11/111	34	0.25	0.49	0.004

EPD's	CED	BW	WW	YW	MILK	\$ W	\$ F	\$ G	\$ B
10	1.4	58	99	26	54.96	55.63	23.92	104.95	

Dam's Production: ^{BW} 2 @ 106 ^{WW} 2 @ 110



ROTH ANGUS 25 01/16/17 Reg# 19022399 Tattoo: 771

CONNEALY BLACK GRANITE
 #Connealy Consensus 7229
 #EURA ELGA OF CONANGA 9109
 #CONNEALY CONSENSUS
 BLUE LILLY OF CONANGA 16
 #S A V BISMARCK 5682
 EURA CAL OF CONANGA 56B
 #SITZ UPWARD 307R
 PLAINVIEW LASSIE 71B
 S A V WALL STREET 7091
 ROTH BANDOLIER 4031
 #STYLES UPGRADE J59
ROTH BANDOLIER 238
 ROTH BANDOLIER 037

BW Adj. WW Adj. YW			Ultrasound		Carcass EPD's			
BW	Adj. WW	Adj. YW	REA	IMF	CW	Marb.	REA	FAT
82	716/106	1298/100	16.6/112	4.11/95	23	0.17	0.47	0.01

EPD's	CED	BW	WW	YW	MILK	\$ W	\$ F	\$ G	\$ B
10	1.1	57	94	25	55.06	47.3	20.84	76.96	

Dam's Production: ^{BW} 2 @ 101 ^{WW} 2 @ 109 **Use on Larger Framed Heifers**



We couldn't have a successful sale without our great friends!

ROTH ANGUS 26 01/20/17 Reg# 19022401 Tattoo: 783
 #Connealy Consensus 7229
CONNEALY BLACK GRANITE
 #EURA ELGA OF CONANGA 9109
 #S A V IRON MOUNTAIN 8066
#ROTH WENDY 260
 #ROTH WENDY 8111

#CONNEALY CONSENSUS
 BLUE LILLY OF CONANGA 16
 #S A V BISMARCK 5682
 EURA CAL OF CONANGA 56B
 #TC GRIDIRON 258
 S A V MADAME PRIDE 3249
 BALDRIDGE LINK L29
 ROTH WENDY 6063

Ultrasound			Carcass EPD's					
BW	Adj. WW	Adj. YW	REA	IMF	CW	Marb.	REA	FAT
80	619/92	1261/97	14.7/99	5.13/118	36	0.47	0.42	0.015

EPD's	CED	BW	WW	YW	MILK	\$ W	\$ F	\$ G	\$ B
10	1.0	55	97	21	46.66	54.11	31.35	116.1	

Dam's Production: BW 4 @ 102 WW 4 @ 102 **Heifer Bull**



Lot 26

ROTH ANGUS 27 01/20/17 Reg# 19022416 Tattoo: 784
 #Connealy Consensus 7229
CONNEALY BLACK GRANITE
 #EURA ELGA OF CONANGA 9109
 #S A V PIONEER 7301
ROTH ELINE 061
 ROTH ELINE 8075

#CONNEALY CONSENSUS
 BLUE LILLY OF CONANGA 16
 #S A V BISMARCK 5682
 EURA CAL OF CONANGA 56B
 #S A V FINAL ANSWER 0035
 S A V BLACKBIRD 5297
 #F A R KRUGERRAND 410H
 ROTH ELINE 5197

Ultrasound			Carcass EPD's					
BW	Adj. WW	Adj. YW	REA	IMF	CW	Marb.	REA	FAT
81	678/100	1388/107	13.8/93	3.87/89	41	0.25	0.45	0.03

EPD's	CED	BW	WW	YW	MILK	\$ W	\$ F	\$ G	\$ B
10	1.3	64	116	21	51.74	82.86	18.95	118.97	

Dam's Production: BW 5 @ 101 WW 5 @ 99 **Use on Larger Framed Heifers**

ROTH ANGUS 28 01/01/17 Reg# 19022588 Tattoo: 707
 #Barstow Cash
BARSTOW BANKROLL B73
 BARSTOW MISS DIANNA Z25
 #A A R TEN X 7008 S A
ROTH BEAUTY 544
 ROTH BEAUTY 3009

#SITZ DASH 10277
 BARSTOW QUEEN W16
 #CAR EFFICIENT 534
 #BARSTOW MISS DIANNA X128
 #MYTTY IN FOCUS
 #A A R LADY KELTON 5551
 #W C C SPECIAL DESIGN L309
 ROTH BEAUTY 159

Ultrasound			Carcass EPD's					
BW	Adj. WW	Adj. YW	REA	IMF	CW	Marb.	REA	FAT
69	687/96	1263/96	14.6/96	4.01/86	23	0.16	0.27	0.015

EPD's	CED	BW	WW	YW	MILK	\$ W	\$ F	\$ G	\$ B
13	-1.5	48	96	25	44.06	57.22	17.37	75.38	

Dam's Production: BW 1 @ 91 WW 1 @ 96 **Heifer Bull**



Lot 29

ROTH ANGUS 29 01/01/17 Reg# 19022585 Tattoo: 711
 #Barstow Cash
BARSTOW BANKROLL B73
 BARSTOW MISS DIANNA Z25
 #COLEMAN REGIS 904
ROTH ROYAL LASS 503
 ROTH ROYAL LASS 335

#SITZ DASH 10277
 BARSTOW QUEEN W16
 #CAR EFFICIENT 534
 #BARSTOW MISS DIANNA X128
 #S A V FINAL ANSWER 0035
 COLEMAN DONNA 714
 #SOO LINE MOTIVE 9016
 ROTH ROYAL LASS 6095

Ultrasound			Carcass EPD's					
BW	Adj. WW	Adj. YW	REA	IMF	CW	Marb.	REA	FAT
67	721/101	1340/102	15.6/103	3.72/79	53	0.34	0.75	-0.044

EPD's	CED	BW	WW	YW	MILK	\$ W	\$ F	\$ G	\$ B
13	-1.0	61	121	31	66.08	103.04	32.6	163.21	

Dam's Production: BW 1 @ 88 WW 1 @ 101 **Heifer Bull**

ROTH ANGUS 30 01/02/17 Reg# 19022582 Tattoo: 713
 #Barstow Cash
BARSTOW BANKROLL B73
 BARSTOW MISS DIANNA Z25
 A A R TEN GAUGE 1501
ROTH EMPRESS 5124
 ROTH EMPRESS 128

#SITZ DASH 10277
 BARSTOW QUEEN W16
 #CAR EFFICIENT 534
 #BARSTOW MISS DIANNA X128
 #A A R TEN X 7008 S A
 A A R CLOVA PRIDE 9549
 #S A V FINAL ANSWER 0035
 ROTH EMPRESS 9066

Ultrasound			Carcass EPD's					
BW	Adj. WW	Adj. YW	REA	IMF	CW	Marb.	REA	FAT
78	751/105	1351/102	16.7/110	3.71/79	30	0.13	0.41	-0.006

EPD's	CED	BW	WW	YW	MILK	\$ W	\$ F	\$ G	\$ B
11	-0.5	63	120	23	53.31	91.22	18.51	98.88	

Dam's Production: BW 1 @ 101 WW 1 @ 105 **Heifer Bull**

ROTH ANGUS 31 01/01/17 Reg# 19022528 Tattoo: 701
 #Werner War Party 2417
VBR CHIEFTAIN 3W21
 VBR 1ND9 OF 611 NEW DAY
 #VAR ROCKY 80029
ROTH HENRIETTA PRIDE 599
 ROTH HENRIETTA PRIDE 5012

#CONNEALY ONWARD
 BAAR USA LADY JAYE 489
 #B/R NEW DAY 454
 VBR 611 TOTAL OF 428
 #HARB ONWARD 786 J H
 #VERMILION LASS 0029
 #BALDRIDGE NEBRASKA 901
 ROTH HENRIETTA PRIDE 1334

Ultrasound			Carcass EPD's					
BW	Adj. WW	Adj. YW	REA	IMF	CW	Marb.	REA	FAT
69	675/95	1296/99	15.8/104	5.96/127	21	0.46	0.39	0.016

EPD's	CED	BW	WW	YW	MILK	\$ W	\$ F	\$ G	\$ B
4	1.4	57	102	26	52.11	61.82	33.24	87.89	

Dam's Production: BW 1 @ 91 WW 1 @ 95 **Use on Larger Framed Heifers**



ROTH ANGUS 32 01/01/17 Reg# 19022118 Tattoo: 703
 #Werner War Party 2417
VBR CHIEFTAIN 3W21
 VBR 1ND9 OF 611 NEW DAY
 #BARSTOW CASH
ROTH EMPRESS 526
 ROTH EMPRESS 301

#CONNEALY ONWARD
 BAAR USA LADY JAYE 489
 #B/R NEW DAY 454
 VBR 611 TOTAL OF 428
 #SITZ DASH 10277
 BARSTOW QUEEN W16
 #HF PROWLER 43U
 ROTH EMPRESS 9014

ANGUSGS			Ultrasound		Carcass EPD's			
BW	Adj. WW	Adj. YW	REA	IMF	CW	Marb.	REA	FAT
70	727/102	1335/101	14.9/98	5.09/109	27	0.38	0.33	0.004

EPD's	CED	BW	WW	YW	MILK	\$ W	\$ F	\$ G	\$ B
	7	1.0	65	115	21	54.2	80.24	29.27	100.71

Dam's Production: BW 1 @ 92 WW 1 @ 102 **Heifer Bull**



Entertainment for everyone at the bull sale.

ROTH ANGUS 33 01/10/17 Reg# 19022530 Tattoo: 709
 #Werner War Party 2417
VBR CHIEFTAIN 3W21
 VBR 1ND9 OF 611 NEW DAY
 ROTH TIGER 170
ROTH WENDY 4239
 ROTH WENDY 1302

#CONNEALY ONWARD
 BAAR USA LADY JAYE 489
 #B/R NEW DAY 454
 VBR 611 TOTAL OF 428
 #HF TIGER 5T
 ROTH MISS LUCY 8074
 #HF TIGER 5T
 BROKEN ARROW ROTH WENDY 833

ANGUSGS			Ultrasound		Carcass EPD's			
BW	Adj. WW	Adj. YW	REA	IMF	CW	Marb.	REA	FAT
89	720/101	1270/96	14.4/95	4.19/90	24	0.3	0.3	0.012

EPD's	CED	BW	WW	YW	MILK	\$ W	\$ F	\$ G	\$ B
	0	3.8	58	101	26	46.09	59.27	24.9	85.41

Dam's Production: BW 1 @ 113 WW 1 @ 101

ROTH ANGUS 34 01/02/17 Reg# 19022442 Tattoo: 717

Baldrige Waylon W34
BALDRIDGE JENNINGS Z064
 BALDRIDGE MAVERICK T43
 #BARSTOW CASH
ROTH EVERELDA ENTENSE 564
 ROTH EVERELDA ENTENSE 5006
 #GAR-EGL PROTEGE
 BALDRIDGE BLACKCAP T163
 BALDRIDGE RAPID R31
 BALDRIDGE MAVERICK R39
 #SITZ DASH 10277
 BARSTOW QUEEN W16
 #P V F NEW HORIZON 001
 ROTH EVERELDA ENTENSE 3060

ANGUSGS			Ultrasound		Carcass EPD's			
BW	Adj. WW	Adj. YW	REA	IMF	CW	Marb.	REA	FAT
76	787/110	1445/110	16.3/107	6.42/137	35	0.64	0.3	0.005

EPD's	CED	BW	WW	YW	MILK	\$ W	\$ F	\$ G	\$ B
	3	1.7	69	124	20	53.68	94.44	37.17	128.38

Dam's Production: BW 1 @ 99 WW 1 @ 110 **Use on Larger Framed Heifers**



ROTH ANGUS 35 01/10/17 Reg# 19022445 Tattoo: 737

Baldrige Waylon W34
BALDRIDGE JENNINGS Z064
 BALDRIDGE MAVERICK T43
 #BARSTOW CASH
ROTH LUCY 501
 ROTH LUCY 9006
 #GAR-EGL PROTEGE
 BALDRIDGE BLACKCAP T163
 BALDRIDGE RAPID R31
 BALDRIDGE MAVERICK R39
 #SITZ DASH 10277
 BARSTOW QUEEN W16
 #MYTTY IN FOCUS
 ROTH LUCY 7049

ANGUSGS			Ultrasound		Carcass EPD's			
BW	Adj. WW	Adj. YW	REA	IMF	CW	Marb.	REA	FAT
79	697/98	1319/100	13.3/88	4.49/96	28	0.46	0.11	0.01

EPD's	CED	BW	WW	YW	MILK	\$ W	\$ F	\$ G	\$ B
	2	2.0	63	114	16	43.44	79.81	28.82	102.32

Dam's Production: BW 1 @ 102 WW 1 @ 98

ROTH ANGUS 36 01/03/17 Reg# 19004286 Tattoo: 723

#Sitz Upward 307R
SCHIEFELBEIN HD 1241
 FROSTY IN FOCUS 2278
 ROTH TIGER 170
ROTH FOREVER LADY 4240
 ROTH FOREVER LADY 8307
 #CONNEALY ONWARD
 SITZ HENRIETTA PRIDE 81M
 #MYTTY IN FOCUS
 FROSTY MARRIOTT 718
 #HF TIGER 5T
 ROTH MISS LUCY 8074
 #FAMOUS 7001
 ROTH FOREVER LADY 3059

ANGUSGS			Ultrasound		Carcass EPD's			
BW	Adj. WW	Adj. YW	REA	IMF	CW	Marb.	REA	FAT
78	662/93	1267/96	15.6/103	4.42/94	9	0.25	0.24	-0.004

EPD's	CED	BW	WW	YW	MILK	\$ W	\$ F	\$ G	\$ B
	10	0.5	36	74	26	32.46	26.4	26.17	49.1

Dam's Production: BW 1 @ 100 WW 1 @ 93 **Heifer Bull**

ROTH ANGUS ROTH NORTHERN LIGHT 7131
37 02/19/17 Reg# 19020354 Tattoo: 7131

#S A V Brilliance 8077 | #S A V BISMARCK 5682
 DDA DAMERON NORTHERN LIGHT | S A V BLACKCAP MAY 5270
 DAMERON NORTHERN MISS 0109 | EXG RS FIRST RATE S903 R3
 DAMERON NORTHERN MISS 3114
 #MYTTY IN FOCUS | #S A F FOCUS OF E R
ROTH EVERELDA ENTENSE 265 | MYTTY COUNTESS 906
 BLACK GROVE EVERELDA 556 | S V F BANDOLIER
 SHADY BROOK ENTENSE 1257

Ultrasound			Carcass EPD's					
BW	Adj. WW	Adj. YW	REA	IMF	CW	Marb.	REA	FAT
90	775/115	1444/108	14.2/96	2.77/64	59	0.24	0.42	0.007

EPD's	CED	BW	WW	YW	MILK	\$ W	\$ F	\$ G	\$ B
	8	2.2	63	108	30	60.01	68.59	17.1	143.57

Dam's Production: BW 3@99 WW 3@115



ROTH ANGUS ROTH NORTHERN LIGHT 7136
38 02/20/17 Reg# 19020352 Tattoo: 7136

#S A V Brilliance 8077 | #S A V BISMARCK 5682
 DDA DAMERON NORTHERN LIGHT | S A V BLACKCAP MAY 5270
 DAMERON NORTHERN MISS 0109 | EXG RS FIRST RATE S903 R3
 DAMERON NORTHERN MISS 3114
 ROTH TIGER 115 | #HF TIGER 5T
ROTH LADY 3132 | ROTH KINDNES EVIDENCE 5015
 ROTH LADY 8110 | #FAMOUS 7001
 ROTH LADY 3084

Ultrasound			Carcass EPD's					
BW	Adj. WW	Adj. YW	REA	IMF	CW	Marb.	REA	FAT
84	619/92	1323/99	13.8/93	4.27/98	36	0.12	0.26	0.008

EPD's	CED	BW	WW	YW	MILK	\$ W	\$ F	\$ G	\$ B
	6	2.0	54	95	20	42.38	51.19	13.33	97.51

Dam's Production: BW 2@94 WW 2@87

ROTH ANGUS ROTH OPEN RANGE 725
39 01/03/17 Reg# 19022486 Tattoo: 725

#Sitz Identity 7828 | #SITZ IDENTITY 2575
HILLTOP OPEN RANGE 2279 | #SITZ BEEBE QUEEN 1956
 HT HAZEL GP 97 | #SITZ ALLIANCE 7544
 HILLTOP HAZEL GP 7120
 ROTH NEW HORIZON 9324 | ROTH NEW HORIZON 5055
ROTH KINDNES EVIDENCE 3121 | ROTH FOREVER LADY 3059
 ROTH KINDNES EVIDENCE 025 | #SYDGEN C C & 7
 ROTH KINDNES EVIDENCE 5015

Ultrasound			Carcass EPD's					
BW	Adj. WW	Adj. YW	REA	IMF	CW	Marb.	REA	FAT
81	614/91	1241/96	14.4/97	5.27/121	31	0.31	0.3	0.019

EPD's	CED	BW	WW	YW	MILK	\$ W	\$ F	\$ G	\$ B
	11	-0.5	49	99	23	40.85	62	23.19	99.26

Dam's Production: BW 2@100 WW 2@91 **Heifer Bull**

ROTH ANGUS ROTH OPEN RANGE 731
40 01/09/17 Reg# 19022480 Tattoo: 731

#Sitz Identity 7828 | #SITZ IDENTITY 2575
HILLTOP OPEN RANGE 2279 | #SITZ BEEBE QUEEN 1956
 HT HAZEL GP 97 | #SITZ ALLIANCE 7544
 HILLTOP HAZEL GP 7120
 #V D A R REALLY WINDY 4097 | #A A R REALLY WINDY 1205
ROTH ELINE 387 | VДАР BLACKBIRD 2031
 ROTH ELINE 061 | #S A V PIONEER 7301
 ROTH ELINE 8075

Ultrasound			Carcass EPD's					
BW	Adj. WW	Adj. YW	REA	IMF	CW	Marb.	REA	FAT
85	643/95	1217/94	15.8/107	4.16/96	29	0.26	0.48	0.022

EPD's	CED	BW	WW	YW	MILK	\$ W	\$ F	\$ G	\$ B
	6	1.5	65	119	18	48.22	87.83	23.27	100.75

Dam's Production: BW 3@101 WW 3@98

ROTH ANGUS ROTH OPEN RANGE 734
41 01/10/17 Reg# 19022482 Tattoo: 734

#Sitz Identity 7828 | #SITZ IDENTITY 2575
HILLTOP OPEN RANGE 2279 | #SITZ BEEBE QUEEN 1956
 HT HAZEL GP 97 | #SITZ ALLIANCE 7544
 HILLTOP HAZEL GP 7120
 #V D A R REALLY WINDY 4097 | #A A R REALLY WINDY 1205
ROTH PRIDE 381 | VДАР BLACKBIRD 2031
 ROTH PRIDE 016 | #CONNELLY CONTRAST
 ROTH PRIDE 8104

Ultrasound			Carcass EPD's					
BW	Adj. WW	Adj. YW	REA	IMF	CW	Marb.	REA	FAT
75	719/106	1293/99	13.0/88	4.15/96	41	0.34	0.31	0.032

EPD's	CED	BW	WW	YW	MILK	\$ W	\$ F	\$ G	\$ B
	12	-1.1	63	112	21	55.63	76.05	20.86	119.57

Dam's Production: BW 3@91 WW 3@104 **Heifer Bull**

ROTH ANGUS ROTH OPEN RANGE 742
42 01/11/17 Reg# 19022474 Tattoo: 742

#Sitz Identity 7828 | #SITZ IDENTITY 2575
HILLTOP OPEN RANGE 2279 | #SITZ BEEBE QUEEN 1956
 HT HAZEL GP 97 | #SITZ ALLIANCE 7544
 HILLTOP HAZEL GP 7120
 #WERNER WAR PARTY 2417 | #CONNELLY ONWARD
ROTH WENDY 420 | BAAR USA LADY JAYE 489
 ROTH WENDY 04 | #S A V PIONEER 7301
 ROTH WENDY 8022

Ultrasound			Carcass EPD's					
BW	Adj. WW	Adj. YW	REA	IMF	CW	Marb.	REA	FAT
75	662/99	1286/100	14.5/97	4.25/92	33	0.21	0.28	0.025

EPD's	CED	BW	WW	YW	MILK	\$ W	\$ F	\$ G	\$ B
	9	0.1	62	120	27	54.88	91.96	16.8	103.44

Dam's Production: BW 2@97 WW 2@99 **Heifer Bull**



ROTH ANGUS ROTH OPEN RANGE 743
43 01/12/17 Reg# 19022478 Tattoo: 743

#Sitz Identity 7828
HILLTOP OPEN RANGE 2279
 HT HAZEL GP 97
 ROTH TIGER 170
ROTH EMPRESS 4112
 ROTH EMPRESS 6059

#SITZ IDENTITY 2575
 #SITZ BEEBE QUEEN 1956
 #SITZ ALLIANCE 7544
 HILLTOP HAZEL GP 7120
 #HF TIGER 5T
 ROTH MISS LUCY 8074
 #F A R KRUGERRAND 410H
 ROTH EMPRESS 016

BW Adj. WW Adj. YW			Ultrasound		Carcass EPD's			
BW	Adj. WW	Adj. YW	REA	IMF	CW	Marb.	REA	FAT
74	646/96	1273/99	12.9/86	5.10/110	34	0.29	0.18	0.023

EPD's	CED	BW	WW	YW	MILK	\$ W	\$ F	\$ G	\$ B
	10	-0.1	53	106	25	45.49	72.08	19.34	103.71

Dam's Production: BW 1 @ 91 WW 1 @ 96 **Heifer Bull**

ROTH ANGUS ROTH OPEN RANGE 773
44 01/17/17 Reg# 19022494 Tattoo: 773

#Sitz Identity 7828
HILLTOP OPEN RANGE 2279
 HT HAZEL GP 97
 #S A V PIONEER 7301
#ROTH FOREVER LADY 049
 ROTH FOREVER LADY 8139

#SITZ IDENTITY 2575
 #SITZ BEEBE QUEEN 1956
 #SITZ ALLIANCE 7544
 HILLTOP HAZEL GP 7120
 #S A V FINAL ANSWER 0035
 S A V BLACKBIRD 5297
 BALDRIDGE LINK L29
 ROTH FOREVER LADY 120

BW Adj. WW Adj. YW			Ultrasound		Carcass EPD's			
BW	Adj. WW	Adj. YW	REA	IMF	CW	Marb.	REA	FAT
87	671/99	1295/100	17.6/119	4.80/111	40	0.38	0.61	0.048

EPD's	CED	BW	WW	YW	MILK	\$ W	\$ F	\$ G	\$ B
	5	1.8	61	116	25	49.92	85.07	25.12	123.7

Dam's Production: BW 6 @ 104 WW 6 @ 104

ROTH ANGUS ROTH WINDY 788
46 01/21/17 Reg# 19011974 Tattoo: 788

#V D A R Really Windy 4097
ROTH REALLY WINDY 3204
 ROTH MISS SHIPPS 563
 ROTH BASIC INSTINCT 1114
ROTH BEAUTY 5109
 ROTH BEAUTY 116

#A A R REALLY WINDY 1205
 VDAR BLACKBIRD 2031
 #F A R KRUGERRAND 410H
 GB MISS SHIPPS 2093
 DUFF BASIC INSTINCT 6501
 ROTH PRIDE 8104
 #HF TIGER 5T
 ROTH BEAUTY 4108

BW Adj. WW Adj. YW			Ultrasound		Carcass EPD's			
BW	Adj. WW	Adj. YW	REA	IMF	CW	Marb.	REA	FAT
78	880/123	1459/111	13.7/90	5.61/120	16	0.11	-0.05	0.002

EPD's	CED	BW	WW	YW	MILK	\$ W	\$ F	\$ G	\$ B
	5	1.7	70	111	23	64.23	69.13	13.19	58.83

Dam's Production: BW 1 @ 101 WW 1 @ 123 **Use on Larger Framed Heifers**

ROTH ANGUS ROTH TEN X 799
48 01/28/17 Reg# 19057209 Tattoo: 799

#A A R Ten X 7008 S A
ROTH TEN X 434
 ROTH PRIDE 016
 BALDRIDGE LINK L29
ROTH WENDY 8059
 ROTH WENDY 1339

#MYTTY IN FOCUS
 #A A R LADY KELTON 5551
 #CONNELLY CONTRAST
 ROTH PRIDE 8104
 #SITZ ALLIANCE 6595
 BALDRIDGE BLACKBIRD 22E
 #GDAR SVF RUSS 184B
 DOUBLE BAR WENDY 508-0100

BW Adj. WW Adj. YW			Ultrasound		Carcass EPD's			
BW	Adj. WW	Adj. YW	REA	IMF	CW	Marb.	REA	FAT
80	659/97	1273/98	14.3/97	5.51/127	1+22	1+32	1+.06	1+.021

EPD's	CED	BW	WW	YW	MILK	\$ W	\$ F	\$ G	\$ B
		1+1.3	1+51	1+94	1+25	45.40	51.49	21.82	76.60

Dam's Production: BW 8 @ 100 WW 8 @ 102



ROTH ANGUS ROTH OPEN RANGE 782
45 01/19/17 Reg# 19022479 Tattoo: 782

#Sitz Identity 7828
HILLTOP OPEN RANGE 2279
 HT HAZEL GP 97
 #S A V IRON MOUNTAIN 8066
ROTH DIXIE ERICA 339
 ROTH DIXIE ERICA 5045

#SITZ IDENTITY 2575
 #SITZ BEEBE QUEEN 1956
 #SITZ ALLIANCE 7544
 HILLTOP HAZEL GP 7120
 #TC GRIDIRON 258
 S A V MADAME PRIDE 3249
 #W C C SPECIAL DESIGN L309
 #J R DIXIE ERICA 379H

BW Adj. WW Adj. YW			Ultrasound		Carcass EPD's			
BW	Adj. WW	Adj. YW	REA	IMF	CW	Marb.	REA	FAT
88	605/89	1287/99	11.9/80	5.01/115	34	0.29	0.14	0.03

EPD's	CED	BW	WW	YW	MILK	\$ W	\$ F	\$ G	\$ B
	2	2.9	59	119	18	34.33	92.28	17.77	106.55

Dam's Production: BW 2 @ 101 WW 2 @ 89

ROTH ANGUS ROTH TEN X 798
47 01/28/17 Reg# 19061223 Tattoo: 798

#A A R Ten X 7008 S A
ROTH TEN X 434
 ROTH PRIDE 016
 #COLEMAN REGIS 904
ROTH KINDNESS EVIDENCE 406
 ROTH KINDNESS EVIDENCE 204

#MYTTY IN FOCUS
 #A A R LADY KELTON 5551
 #CONNELLY CONTRAST
 ROTH PRIDE 8104
 #S A V FINAL ANSWER 0035
 COLEMAN DONNA 714
 #HF TIGER 5T
 ROTH KINDNESS EVIDENCE 6002

BW Adj. WW Adj. YW			Ultrasound		Carcass EPD's			
BW	Adj. WW	Adj. YW	REA	IMF	CW	Marb.	REA	FAT
71	707/105	1270/99	15.6/104	5.18/112	1+10	1+.08	1+.09	1+.008

EPD's	CED	BW	WW	YW	MILK	\$ W	\$ F	\$ G	\$ B
		1-1.2	1+56	1+95	1+24	55.54	49.80	13.90	42.94

Dam's Production: BW 1 @ 87 WW 1 @ 105 **Heifer Bull**

ROTH ANGUS ROTH WINDY 7102
49 01/31/17 Reg# 19012067 Tattoo: 7102

#V D A R Really Windy 4097
ROTH REALLY WINDY 3204
 ROTH MISS SHIPPS 563
 #WERNER WAR PARTY 2417
ROTH WENDY 515
 ROTH WENDY 04

#A A R REALLY WINDY 1205
 VDAR BLACKBIRD 2031
 #F A R KRUGERRAND 410H
 GB MISS SHIPPS 2093
 #CONNELLY ONWARD
 BAAR USA LADY JAYE 489
 #S A V PIONEER 7301
 ROTH WENDY 8022

BW Adj. WW Adj. YW			Ultrasound		Carcass EPD's			
BW	Adj. WW	Adj. YW	REA	IMF	CW	Marb.	REA	FAT
75	636/89	1238/94	18.1/119	3.98/85	6	-0.02	0.21	-0.006

EPD's	CED	BW	WW	YW	MILK	\$ W	\$ F	\$ G	\$ B
	8	0.7	50	90	21	42.35	45	11.55	31.26

Dam's Production: BW 1 @ 98 WW 1 @ 89 **Heifer Bull**

... FALL ANGUS BULLS ...

ROTH ANGUS 50 **ROTH UNANIMOUS 6307**
 09/04/16 Reg# 18705536 Tattoo: 6307

Visiontopline Royal Stockman
VISION UNANIMOUS 1418
 #VISION EDELLA 665

#F A R KRUGERRAND 410H
ROTH EVERALDA ENTENSE 9019
 ROTH EVERALDA ENTENSE 6060

GAMBLES ROYAL FLUSH
 LAGRAND PRIDE 7140
 #BOYD ON TARGET 1083
 VISION EDELLA 337
 #KRUGERRAND OF DORE 490
 #F A R ERIANNA 286F
 #BON VIEW NEW DESIGN 878
 R&R EVERELDA ENTENSE 011

Carcass EPD's

BW	Adj. WW	2/4 Wt	CW	Marb.	REA	FAT
79	840/113	1580	36	0.5	0.2	0.01

EPD's	CED	BW	WW	YW	MILK	\$ W	\$ F	\$ G	\$ B
	3	3.0	59	108	20	41.11	71.47	30.03	118.27

Dam's Production: BW 5 @ 102 WW 5 @ 103



ROTH ANGUS 51 **ROTH UNANIMOUS 6310**
 09/04/16 Reg# 18705537 Tattoo: 6310

Visiontopline Royal Stockman
VISION UNANIMOUS 1418
 #VISION EDELLA 665

#TC FREEDOM 104
M G M A EVERELDA ENTENSE 801
 SHADYBROOK EVER ENTENSE 547J

GAMBLES ROYAL FLUSH
 LAGRAND PRIDE 7140
 #BOYD ON TARGET 1083
 VISION EDELLA 337
 #CONNEALY FOREFRONT
 #T C RUBY 9095
 #FINKS 5522-6148
 SITZ EVERELDA ENTENSE 1137

Carcass EPD's

BW	Adj. WW	2/4 Wt	CW	Marb.	REA	FAT
80	820/110	1780	33	0.47	0.28	-0.001

EPD's	CED	BW	WW	YW	MILK	\$ W	\$ F	\$ G	\$ B
	3	2.7	55	95	19	40.49	50.49	31.94	109.94

Dam's Production: BW 5 @ 99 WW 5 @ 94

ROTH ANGUS 52 **ROTH TOUR OF DUTY 6320**
 09/09/16 Reg# 18705549 Tattoo: 6320

#Werner War Party 2417
R B TOUR OF DUTY 177
 B A LADY 6807 305

ROTH TIGER 170
ROTH EMPRESS 3203
 ROTH EMPRESS 095

#CONNEALY ONWARD
 BAAR USA LADY JAYE 489
 #VERMILION DATELINE 7078
 G D LADY HI FLYER 302
 #HF TIGER 5T
 ROTH MISS LUCY 8074
 #CONNEALY CONTRAST
 ROTH EMPRESS 7048

Carcass EPD's

BW	Adj. WW	2/4 Wt	CW	Marb.	REA	FAT
70	751/107	1654				

EPD's	CED	BW	WW	YW	MILK	\$ W	\$ F	\$ G	\$ B
	10	0.5	55	100	32	56.86	59.57		

Dam's Production: BW 2 @ 95 WW 2 @ 116 **Heifer Bull**

ROTH ANGUS 53 **ROTH TEN X 6321**
 09/25/16 Reg# 18703491 Tattoo: 6321

#A A R Ten X 7008 S A
ROTH TEN X 428
 ROTH FOREVER LADY 9035

#F A R KRUGERRAND 410H
ROTH MISS SHIPPS 563
 GB MISS SHIPPS 2093

#MYTTY IN FOCUS
 #A A R LADY KELTON 5551
 #LAGRAND SUN DANCE 4211
 MAPLE LANE FOREVER LADY 277
 #KRUGERRAND OF DORE 490
 #F A R ERIANNA 286F
 #G V POWER DRIVE 7369
 G B DYNAMITE 1311

Carcass EPD's

BW	Adj. WW	2/4 Wt	CW	Marb.	REA	FAT
76	724/103	1624	46	0.55	0.48	-0.025

EPD's	CED	BW	WW	YW	MILK	\$ W	\$ F	\$ G	\$ B
	1	2.4	62	111	21	47.54	74.91	37.57	144.81

Dam's Production: BW 8 @ 97 WW 8 @ 110

ROTH ANGUS 54 **ROTH TEN X 6326**
 09/28/16 Reg# 18703495 Tattoo: 6326

#A A R Ten X 7008 S A
ROTH TEN X 428
 ROTH FOREVER LADY 9035

BALDRIDGE LINK L29
ROTH EMPRESS 7048
 ROTH EMPRESS 5054

#MYTTY IN FOCUS
 #A A R LADY KELTON 5551
 #LAGRAND SUN DANCE 4211
 MAPLE LANE FOREVER LADY 277
 #SITZ ALLIANCE 6595
 BALDRIDGE BLACKBIRD 22E
 #BON VIEW NEW DESIGN 878
 ROTH EMPRESS 016

Carcass EPD's

BW	Adj. WW	2/4 Wt	CW	Marb.	REA	FAT
84	736/105	1724	40	0.57	0.41	0.002

EPD's	CED	BW	WW	YW	MILK	\$ W	\$ F	\$ G	\$ B
	2	3.3	63	114	25	48.84	79.81	35.6	133.19

Dam's Production: BW 7 @ 100 WW 7 @ 103

ROTH ANGUS 55 **ROTH TEN X 6328**
 09/25/16 Reg# 18703496 Tattoo: 6328

#A A R Ten X 7008 S A
ROTH TEN X 428
 ROTH FOREVER LADY 9035

ROTH NEW HORIZON 5055
ROTH LUCY 9308
 ROTH LUCY 3049

#MYTTY IN FOCUS
 #A A R LADY KELTON 5551
 #LAGRAND SUN DANCE 4211
 MAPLE LANE FOREVER LADY 277
 #P V F NEW HORIZON 001
 ROTH BEAUTY 3016
 #HYLINE RIGHT TIME 338
 ROTH LUCY 9505

Carcass EPD's

BW	Adj. WW	2/4 Wt	CW	Marb.	REA	FAT
84	682/97	1689				

EPD's	CED	BW	WW	YW	MILK	\$ W	\$ F	\$ G	\$ B
	1	3.3	54	101	25	40.63	62.11		

Dam's Production: BW 5 @ 103 WW 5 @ 110

ROTH ANGUS 56 09/29/16 Reg# 19056626 Tattoo: 6330
 #A A R Ten X 7008 S A
ROTH TEN X 428 ROTH FOREVER LADY 9035
 #V D A R REALLY WINDY 4097
ROTH FOREVER LADY 4207 ROTH FOREVER LADY 2319

#MYTTY IN FOCUS
 #A A R LADY KELTON 5551
 #LAGRAND SUN DANCE 4211
 MAPLE LANE FOREVER LADY 277
 #A A R REALLY WINDY 1205
 VDAR BLACKBIRD 2031
 #HARB PENDLETON 765 J H
 ROTH FOREVER LADY 0308

Carcass EPD's

BW	Adj. WW	2/4 Wt	CW	Marb.	REA	FAT
75	642/91	1499	1+34	1+.74	1+.37	1+.025

EPD's	CED	BW	WW	YW	MILK	\$ W	\$ F	\$ G	\$ B
	1+8	1-3	1+53	1+100	1+22	45.32	60.99	38.97	121.08

Dam's Production: $\frac{BW}{1 @ 104}$ $\frac{WW}{1 @ 91}$ **Heifer Bull**

ROTH ANGUS 57 10/01/16 Reg# 18703498 Tattoo: 6332
 #A A R Ten X 7008 S A
ROTH TEN X 428 ROTH FOREVER LADY 9035
 #CONNEALY DANNY BOY
ROTH BEAUTY 9037 ROTH BEAUTY 7011

#MYTTY IN FOCUS
 #A A R LADY KELTON 5551
 #LAGRAND SUN DANCE 4211
 MAPLE LANE FOREVER LADY 277
 #CONNEALY TIMELINE
 ENERGY OF CONANGA 4851
 #TC FREEDOM 104
 ROTH BEAUTY 4027

Carcass EPD's

BW	Adj. WW	2/4 Wt	CW	Marb.	REA	FAT
82	697/99	1584	42	0.47	0.58	-0.022

EPD's	CED	BW	WW	YW	MILK	\$ W	\$ F	\$ G	\$ B
	3	1.8	59	104	18	44.65	64.07	36.15	134.21

Dam's Production: $\frac{BW}{5 @ 99}$ $\frac{WW}{5 @ 101}$

ROTH ANGUS 58 10/01/16 Reg# 18056040 Tattoo: 6336
 #A A R Ten X 7008 S A
ROTH TEN X 428 ROTH FOREVER LADY 9035
 #S A V IRON MOUNTAIN 8066
ROTH EVERELDA INTENSE 2322 BLACK GROVE EVERELDA 556

#MYTTY IN FOCUS
 #A A R LADY KELTON 5551
 #LAGRAND SUN DANCE 4211
 MAPLE LANE FOREVER LADY 277
 #TC GRIDIRON 258
 S A V MADAME PRIDE 3249
 S V F BANDOLIER
 SHADY BROOK INTENSE 1257

Carcass EPD's

BW	Adj. WW	2/4 Wt	CW	Marb.	REA	FAT
80	693/98	1571	55	0.64	0.59	-0.023

EPD's	CED	BW	WW	YW	MILK	\$ W	\$ F	\$ G	\$ B
	1	2.9	70	129	21	50.02	103.38	40.20	167.57

Dam's Production: $\frac{BW}{2 @ 98}$ $\frac{WW}{2 @ 100}$



Future Cowgirl

Watch & bid online for FREE at

DVAuction
 Broadcasting Real-Time Auctions

View the Auction Live!
 Bid Online... you're ringside
 right at your desk!

Buying online is as easy as 1, 2, 3...

1. Create an account at www.dvauction.com under the "register" tab
2. Apply for bidding approval by clicking on the "details" tab at least 24 hours prior to the auction-a DV representative will notify you once you have been approved
3. Tune in for the sale and make your purchases!

High speed internet is required for successful bidding-be sure to check the lag-time monitor in the top left corner to ensure real-time broadcasts.

Proxy Bidding-if you can't make time to watch the sale, register a proxy bid and let our system represent your bid while you're away. Look for the "proxy bid" tab on the auction listing, and fill in your maximum bids. We'll handle the rest!

Having troubles? During the auction, you can type a message to the operator at any time for assistance. Our full-time support team can also always be reached at (402) 474-5557.



DVAuction
 Broadcasting Real-Time Auctions

DVA Rep. Justin Dikoff (605) 290-0635 - email: jdikoff@dvauction.com
 Please feel free to contact me with questions about the sale or to view the cattle for you.

ROTH

ANGUS RANCH



1999



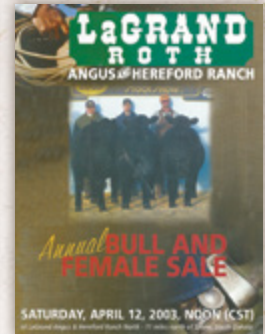
2000



2001



2002



2003



2004



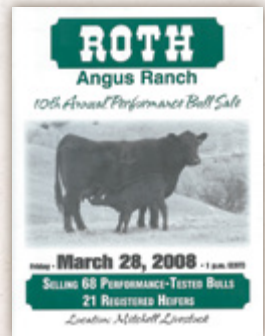
2005



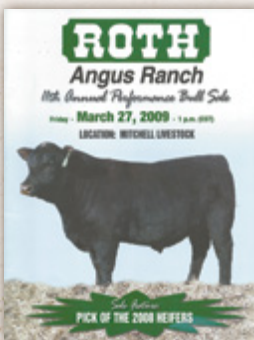
2006



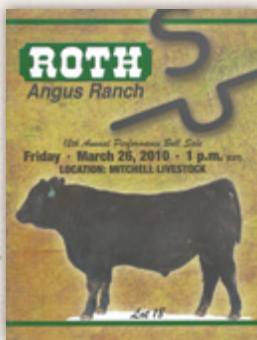
2007



2008



2009



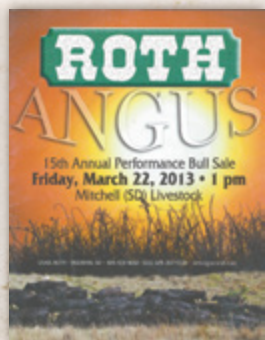
2010



2011



2012



2013



2014



2015



2016



2017

20 Year Commitment to Excellence!

ROTH

Angus Ranch
42879 277th St.
Freeman, SD 57029



20th Annual Sale

FRIDAY, MARCH 23, 2018
4:00 PM • At the Ranch, Freeman, SD



Lot 7



Lot 21



WWW.ROTHANGUSRANCH.COM